

**ultra** **site**®

A PLAYCORE Company



# LIFE'S INTERMISSIONS

PLANTERS & FURNISHINGS | DOG PARKS | SHADE | OUTDOOR FITNESS





UltraSite Manufacturing Video



<https://ultrasite.wistia.com/medias/2ayi10waii>

|               |   |
|---------------|---|
| Our Story     | 4 |
| Customization | 6 |

**PREMIUM COLLECTION**

Sleek designs to enhance any landscape.

|            |    |
|------------|----|
| New Haven  | 9  |
| Denali     | 10 |
| Kensington | 12 |
| Lexington  | 13 |
| Wilmington | 14 |
| Hartford   | 15 |
| Hamilton   | 16 |
| Augusta    | 17 |
| Savannah   | 18 |
| Pasadena   | 19 |
| Huntington | 20 |
| Palmetto   | 21 |
| Richmond   | 22 |
| Madison    | 24 |

|            |    |
|------------|----|
| Durham     | 26 |
| Charleston | 28 |
| Phoenix    | 30 |
| Oxford     | 32 |
| Jackson    | 34 |

**ULTRACOAT COLLECTION**

Premium Thermoplastic coating for lasting durability.

|                      |    |
|----------------------|----|
| Benches              | 36 |
| Tables               | 44 |
| Receptacles/Planters | 58 |

**EARLY CHILDHOOD COLLECTION**

Products specifically designed for little ones.

|         |    |
|---------|----|
| Benches | 61 |
| Tables  | 63 |

**NATURAL COLLECTION**

Recycled Plastic, Wood & Aluminum for a natural aesthetic.

|                               |    |
|-------------------------------|----|
| Recycled Benches              | 66 |
| Recycled Tables               | 69 |
| Recycled Planters/Receptacles | 74 |
| 100% Recycled Aluminum        | 76 |
|                               | 77 |

**ACCESSORIES**

Complete your space with coordinating accessories.

|            |    |
|------------|----|
| Bike Racks | 79 |
| Bollards   | 82 |
| Grills     | 84 |
| Umbrellas  | 88 |

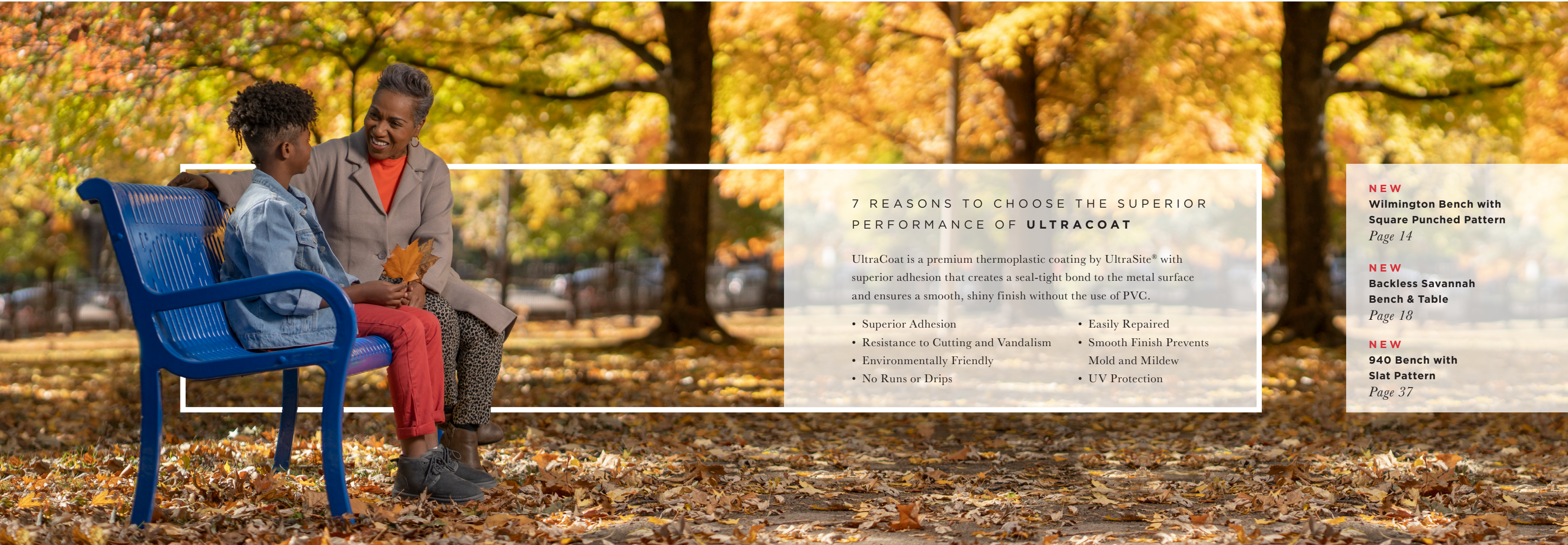
**SHOWCASE**

Complementary outdoor products from our family of brands.

|                         |    |
|-------------------------|----|
| UltraShade/UltraShelter | 91 |
| BarkPark                | 92 |
| ActionFit               | 93 |

**SPECIFICATIONS**

|                         |    |
|-------------------------|----|
| Product Selection Guide | 94 |
| Warranties              | 96 |
| Wood Color Options      | 97 |
| Steel Pattern Options   | 98 |
| Steel Color Options     | 99 |



**7 REASONS TO CHOOSE THE SUPERIOR PERFORMANCE OF ULTRACOAT**

UltraCoat is a premium thermoplastic coating by UltraSite® with superior adhesion that creates a seal-tight bond to the metal surface and ensures a smooth, shiny finish without the use of PVC.

- Superior Adhesion
- Resistance to Cutting and Vandalism
- Environmentally Friendly
- No Runs or Drips
- Easily Repaired
- Smooth Finish Prevents Mold and Mildew
- UV Protection

**NEW**  
**Wilmington Bench with Square Punched Pattern**  
 Page 14

**NEW**  
**Backless Savannah Bench & Table**  
 Page 18

**NEW**  
**940 Bench with Slat Pattern**  
 Page 37

## OUR STORY

### ULTRASITE : ENHANCING LIFE'S INTERMISSIONS

At UltraSite, we take pride in providing communities the opportunity to enjoy life's intermissions – a slight pause from our busy lifestyles. UltraSite's brands of site amenities, shades, dog parks, and outdoor fitness products are the superior choice that provide low maintenance and durability to any outdoor recreation location.

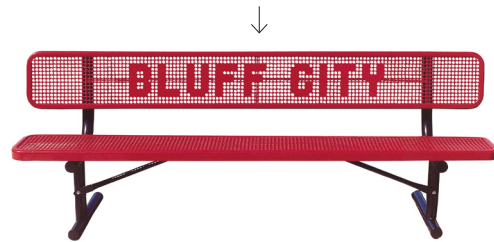
We have been standing behind our products for over 20 years so that you can watch the sunrise, grill out with your family, or just have a nice place to relax while the kids are playing. We hope that UltraSite can join you as you build your next intermission.



## CUSTOMIZATION AND PERSONALIZATION

Make it yours, customization is a great way to enhance your landscape and promote your school, brand, city, logo, and so much more!

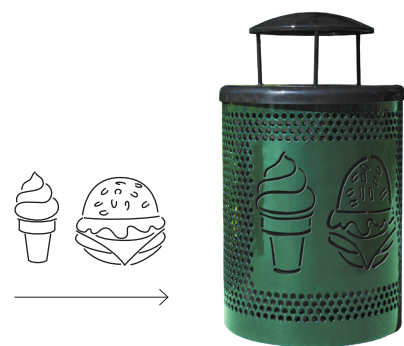
### BLUFF CITY



Punched Lettering



Lasered Lettering



Custom Logo

### LOGOS & LETTERING

Include your logo, emblem, or insignia on most UltraSite® classic furnishings.

- Smooth cut edges
- Customized typeface and style
- 2D proof provided for approval



MAKE YOUR GRAPHICS STAND OUT!

Try adding a contrasting colored backing, available in any of our powder coat colors.

PREMIUM COLLECTION



420-TMA6 6' New Haven Bench, thermally modified ash plank, white frame



UltraSite's Premium Collection is on CADdetails!  
[microsite.caddetails.com/4643](https://microsite.caddetails.com/4643)



NEW HAVEN  
 COLLECTION



420-TMA6 6' New Haven Bench, thermally modified ash plank, white frame

WHAT IS THERMAL MODIFICATION?

Thermal modification is a non-toxic treatment process that improves the physical and material properties of the wood. These benefits include enhanced durability, water resistance, and a beautiful finish that requires less maintenance than traditional wood.



420-TMA6 6' New Haven Bench, thermally modified ash plank, white frame

420/421 | NEW HAVEN BENCH

- Available with back (420) and **NEW** without back version (421)
- Thermally Modified Ash planks with powder coated steel frame
- 1" x 4" Thermally Modified Ash wood planks (color shown)
- 3/8" steel laser cut legs with 3/8" thick support bars
- Powder coated frame
- Portable and/or surface mount

| 4 FOOT   | 4 FOOT BACKLESS | 6 FOOT   | 6 FOOT BACKLESS | 8 FOOT   | 8 FOOT BACKLESS |
|----------|-----------------|----------|-----------------|----------|-----------------|
| 420-TMA4 | 421-TMA4        | 420-TMA6 | 421-TMA6        | 420-TMA8 | 421-TMA8        |



2624 6" diameter New Haven Bollard, in black powder coated finish

2624 | NEW HAVEN BOLLARD

- Available in 6" or 8" diameters
- Available in 3' and 4' heights
- Powder coated finish
- Surface (SM) or inground (S)
- See page 99 for color options

|             | 3 FOOT | 4 FOOT |
|-------------|--------|--------|
| 6" diameter | 2623   | 2624   |
| 8" diameter | 2823   | 2824   |



410SM-R4 4' Denali Bench, surface mount, antique mahogany plank, black frame



413SM-RDR38 Denali Table, surface mount, antique mahogany plank, black frame  
410SM-R2 2' Denali Bench, surface mount, antique mahogany plank, black frame



410SM-R6 6' Denali Bench, surface mount, antique mahogany plank, black frame

410 | DENALI BENCH

- Available in 2', 4', 6', and 8' lengths
- 2" x 2" and 2" x 4" recycled plastic planks, featuring wood grain
- Denali Add-On side table available (412)
- 2-3/8" Steel Frame
- All stainless steel hardware
- Inground or surface mount

| 2 FOOT | 4 FOOT | 6 FOOT | 8 FOOT |
|--------|--------|--------|--------|
| 410-R2 | 410-R4 | 410-R6 | 410-R8 |



413SM-RDR38 Denali Table, surface mount, antique mahogany plank, black frame

413 | DENALI TABLE

- 4 Seat & ADA 3 Seat options available
- 38" table top, available in square or round
- 2" x 2" and 2" x 4" recycled plastic planks, featuring wood grain
- Chairs 2-3/8" Frame
- Table-3 1/2" O.D structural steel tubing
- Powder Coated Frame
- Inground or SM

| ROUND                   | SQUARE                |
|-------------------------|-----------------------|
| 413-RDR38               | 413-R38               |
| 413H-RDR38 (3 SEAT ADA) | 413H-R38 (3 SEAT ADA) |



411SM-R4 6' Denali Backless Bench, surface mount, antique mahogany plank, black frame

411 | DENALI BACKLESS BENCH

- Available in 2', 4', 6', and 8' lengths
- 2" x 2" and 2" x 4" recycled plastic planks, featuring wood grain
- 2-3/8" Steel Frame
- All stainless steel hardware
- Inground or surface mount

| 2 FOOT | 4 FOOT | 6 FOOT | 8 FOOT |
|--------|--------|--------|--------|
| 411-R2 | 411-R4 | 411-R6 | 411-R8 |



412SM-R2 Denali Add-On Side Table, surface mount, antique mahogany plank, black frame

412 | DENALI SIDE TABLE (ADD-ON)

Add a Denali Side Table onto any of our Denali Benches

- 14" Diameter
- 2" x 4" recycled plastic planks, featuring wood grain
- 2-3/8" steel frame
- Powder coated frame
- Mounts to Denali Bench, Bench not included



413SM-R38 Denali Square Table, surface mount, antique mahogany plank, black frame



43SM-S6 6' Kensington Bench with Back, black

KENSINGTON  
COLLECTION



954-FB6 Lexington Bench with Back, Fiesta, black  
FB-32 32 Gallon Receptacle, Fiesta, black with matching rain bonnet lid.

LEXINGTON  
COLLECTION

43/44 | KENSINGTON BENCH

- 6' length
- Powder coated finish
- Available with (43) or without back (44)
- Inground (S) or surface mount (SM)
- See page 99 for color options



44SM-S6 6' Kensington Bench without Back, black

|           | 6 FOOT |
|-----------|--------|
| 43 SERIES | 43-S6  |
| 44 SERIES | 44-S6  |

40/42 | KENSINGTON TABLE

- Choose between the single pedestal square slat table with four seats (40) or round table with three slat seats and a solid top (42)
- Seats fabricated from a 1/4" steel plate with rolled slats
- Powder coated finish
- The 40 is available inground (S) or surface mount (SM), the 42 can be portable and/or surface mount
- See page 99 for color options



40SM-S Kensington Square Pedestal Table with 4 seats, black



42-RDS Kensington Round Solid Top Table with 3 seats, black

|           | SURFACE MOUNT | INGROUND | 3 SEATS  |
|-----------|---------------|----------|----------|
| 40 SERIES | 40SM-S        | 40S-S    | 40SMH3-S |
| 42 SERIES | 42-RDS        | —        |          |

41-SL | KENSINGTON RECEPTACLE

- Features a side loading option and a solid top
- 36 gallon capacity
- Powder coated finish
- 1-1/2" x 1/4" flat steel strips
- All MIG welded frame
- Portable and/or surface mount
- Lid and liner included



41-SL Kensington Receptacle, vertical slat, black



958-S6 6' Lexington Bench without Back, Slat, black

954/958 | LEXINGTON BENCH

- 4', 6', and 8' lengths
- UltraCoat® thermoplastic finish
- 1-1/2" thick cast aluminum frame
- Available with back (954) and without back (958)
- All stainless steel hardware
- Portable and/or surface mount
- Add-ons optional (Example: 954AO-V4)
- Optional Center Arm Kit (954-ARM) sold separately
- See page 99 for color options and 98 for pattern options

| 4 FOOT  | 6 FOOT  | 8 FOOT  | 4 FOOT  | 6 FOOT  | 8 FOOT  |
|---------|---------|---------|---------|---------|---------|
| 954-V4  | 954-V6  | 954-V8  | 958-V4  | 958-V6  | 958-V8  |
| 954-P4  | 954-P6  | 954-P8  | 958-P4  | 958-P6  | 958-P8  |
| 954-FB4 | 954-FB6 | 954-FB8 | 958-FB4 | 958-FB6 | 958-FB8 |
| 954-W4  | 954-W6  | 954-W8  | 958-W4  | 958-W6  | 958-W8  |
| 954-S4  | 954-S6  | 954-S8  | 958-S4  | 958-S6  | 958-S8  |

LX-72 | DUAL LEXINGTON RECEPTACLE

- Holds two 32 gallon liners and two powder coated lids
- Powder coated finish
- 1/8" x 2" steel flat bar
- Optional decals are white
- lettering with black background
- Decals installed onsite
- Portable and/or surface mount
- Lids and liners included
- See page 99 for color options



LX-72FT Lexington Dual Receptacle, black

| FLAT TOP      | ASH URN    | RAIN BONNET |            |
|---------------|------------|-------------|------------|
| LX-72FT       | LX-72AU    | LX-72RB     |            |
| DECAL OPTIONS |            |             |            |
| "CANS"        | "PLASTICS" | "TRASH"     | "RECYCLE"  |
| 01-05-0136    | 01-05-0137 | 01-05-0135  | 01-05-0130 |

LX-36 | LEXINGTON RECEPTACLE

- 36 gallon capacity
- Powder coated finish
- 1/8" x 2" steel flat bar
- All MIG welded frame
- Portable and/or surface mount
- Lid and liner included
- See page 99 for color options



LX-36 Lexington Receptacle, slat, black

| FLAT TOP | ASH URN | RAIN BONNET |
|----------|---------|-------------|
| LX-36FT  | LX-36AU | LX-36RB     |

RD2418-LX | LEXINGTON PLANTER

- 24" wide x 18" high planters
- Powder coated finish
- 1/8" x 2" steel flat bar
- All MIG welded frame
- Portable and/or surface mount
- Inground mounting kit available - sold separately
- 01-05-0212 liner sold separately
- See page 99 for color options



RD2418-LX Lexington Planter, slat, black

WILMINGTON  
COLLECTION

974-S6 6' Wilmington Bench, vertical slats, ultra silver metallic

HARTFORD  
COLLECTION

13SM-SH6 6' Hartford Leaning Rail, ultra silver metallic



NEW Square Punched Pattern

974-SP6 6' Wilmington Bench, square punched, sky blue

|                  | 4 FOOT  | 4 FOOT BACKLESS | 6 FOOT  | 6 FOOT BACKLESS | 8 FOOT  | 8 FOOT BACKLESS |
|------------------|---------|-----------------|---------|-----------------|---------|-----------------|
| Vertical Slats   | 974-S4  | 978-S4          | 974-S6  | 978-S6          | 974-S8  | 978-S8          |
| Horizontal Slats | 974-HS4 | 978-HS4         | 974-HS6 | 978-HS6         | 974-HS8 | 978-HS8         |
| Square Punched   | 974-SP4 | 978-SP4         | 974-SP6 | 978-SP6         | 974-SP8 | 978-SP8         |

974/978 | WILMINGTON BENCH

- 4', 6', and 8' lengths
- Cast aluminum frame with powder coated finish
- Available with (974) or without back version (978)
- Bolt together design
- All MIG Welded
- All stainless steel hardware
- Available in vertical slat, horizontal slat, or **NEW** square punched pattern
- Portable and/or surface mount
- Optional Center Arm Kit (P-974-ARM) available and sold separately
- See page 99 for color options



974-S6-CAPQ 6' Wilmington Awareness Bench, Modern Plaque Option

974CA | WILMINGTON AWARENESS BENCH

- Available in 6' length
- Available with or without plaque option
- Portable and/or surface mount
- Powder coated finish, contact us to learn more



| WITH PLAQUE | WITHOUT PLAQUE |
|-------------|----------------|
| 974-S6-CAPQ | 974-S6-CA      |

CL-36 | CLASSIC RECEPTACLE WITH DOOR

- 1/4" x 1-1/2" steel flat bar
- All MIG welded frame
- Only available in powder coated finish
- All stainless steel hardware
- Portable and/or surface mount
- Lid and liner included



CL-36 Classic Receptacle with Door, vertical slat, black with matching flat top lid

| FLAT TOP LID | ASH URN LID | RAIN BONNET LID |
|--------------|-------------|-----------------|
| CL-36FT      | CL-36AU     | CL-36RB         |



11SM-HS4 4' Hartford Bench, black

11/12 | HARTFORD BENCH

- 4' and 6' lengths
- Powder coated finish
- Available with (11) or without back (12)
- Inground (S) or surface mount (SM)
- See page 99 for color options

|           | 4 FOOT | 6 FOOT |
|-----------|--------|--------|
| 11 SERIES | 11-HS4 | 11-HS6 |
| 12 SERIES | 12-HS4 | 12-HS6 |



10-RDHS Hartford Table, black

10-RDHS | HARTFORD TABLE

- 36" solid table top with umbrella hole
- Powder coated finish
- Portable and/or surface mount
- See page 99 for color options



13SM-SH6 6' Hartford Leaning Rail, black

13 | HARTFORD LEANING RAIL

- 4', 6', and 8' lengths
- Powder coated finish
- Inground (S) or surface mount (SM)
- See page 99 for color options

| 4 FOOT | 6 FOOT | 8 FOOT |
|--------|--------|--------|
| 13-HS4 | 13-HS6 | 13-HS8 |



HAMILTON  
COLLECTION



91C-S6 Hamilton Bench, vertical slat, Spartan bronze metallic  
LX-36RB Lexington Receptacle with Rain Bonnet Lid, Spartan bronze metallic



AUGUSTA  
COLLECTION



93N-HS6 6' Augusta Bench with Back, no arm rests, Spartan bronze

91/92 | HAMILTON BENCH



92-S6 6' Hamilton Bench without Back, vertical slat, black

- 2', 4', 6', or 8' lengths
- Fully welded with powder coated finish
- Vertical or Horizontal Slats
- Frame is a 1" x 1" square solid steel bar
- Available with (91) and without back (92)
- Portable and/or surface mount
- Optional Center Arm (C)
- See page 99 for color options

| 91 SERIES        | 2 FOOT | 4 FOOT | 6 FOOT | 8 FOOT |
|------------------|--------|--------|--------|--------|
| Vertical Slats   | 91-S2  | 91-S4  | 91-S6  | 91-S8  |
| Horizontal Slats |        | 91-HS4 | 91-HS6 | 91-HS8 |

| 92 SERIES        | 4 FOOT | 6 FOOT |
|------------------|--------|--------|
| Vertical Slats   | 92-S4  | 92-S6  |
| Horizontal Slats | 92-HS4 | 92-HS6 |

93/94 | AUGUSTA BENCH



94N-HS6 6' Augusta Bench without Back, no arm rests, Spartan bronze

- 6' length
- Fully welded with powder coated finish
- All MIG welded
- Legs are made from 3/4" laser cut steel plate
- Available with (93) and without back (94)
- Portable and/or surface mount
- Optional Center Arm (C), and No Side Arms (N)
- See page 99 for color options

| 93 SERIES          | 6 FOOT  | 94 SERIES | 6 FOOT  |
|--------------------|---------|-----------|---------|
| No Arms            | 93N-HS6 | No Arms   | 94N-HS6 |
| Side & Center Arms | 93C-HS6 | Side Arms | 94-HS6  |
| Side Arms          | 93-HS6  |           |         |

364 | HAMILTON TABLE



364-RDSD Hamilton Table, solid table top with 91-S2 2' Hamilton Bench, vertical slat, black

- Round or square solid top
- Powder coated finish
- (91) 2' Hamilton Chair recommended (sold separately)

| 364 SERIES | ROUND    | SQUARE |
|------------|----------|--------|
|            | 364-RDSD | 364-SD |

30 | HAMILTON TABLE



30SM-S Hamilton Table with 4 seats, vertical slat, black

- Comes complete with 2, 3, or 4 freestanding seats
- Powder coated finish
- Inground (S) or surface mount (SM)
- See page 99 for color options

| 30 SERIES | 4 SEATS | 3 SEATS (Single Access) | 2 SEATS (Double Access) |
|-----------|---------|-------------------------|-------------------------|
|           | 30-S    | 30H3-S                  | 30H2-S                  |

AG-36 | AUGUSTA RECEPTACLE



AG-36FT Augusta Receptacle, vertical slat, flat top lid, Spartan bronze

- 36 gallon capacity
- Powder coated finish
- 1-1/2" x 1/4" flat steel strips
- Top and bottom rings are 1" pipe
- All MIG welded frame
- Portable and/or surface mount
- Lid and liner included
- See page 99 for color options

| FLAT TOP | ASH URN | RAIN BONNET |
|----------|---------|-------------|
| AG-36FT  | AG-36AU | AG-36RB     |

2643/2843 | AUGUSTA BOLLARD



- Available in 6" or 8" diameters
- Available in 3' and 4' heights
- Powder coated finish
- Surface mount (SM) or inground (S)
- See page 99 for color options

|             | 3 FOOT | 4 FOOT |
|-------------|--------|--------|
| 6" diameter | 2643   | 2644   |
| 8" diameter | 2843   | 2844   |

SAVANNAH  
COLLECTION



Savannah Back Options



B BOW



M MORNING



S SLAT

922-M6 Savannah Bench, Morning, Spartan Bronze

PASADENA  
COLLECTION



16-P36RB Pasadena Receptacle, sky blue, 17-SQP Pasadena Planter, red  
15-P6 6' Pasadena Bench, ultra silver metallic, 18-P2 Pasadena Bike Rack, Orange



920-S6 6' Savannah Table, slat, ultrablue

920 | **NEW** SAVANNAH TABLE

- 6', 8', and ADA available
- Standard in UltraCoat® thermoplastic
- Powder coat available for an upcharge
- 2" x 2" all MIG welded square tube frame
- All stainless steel hardware
- Portable and/or surface mount
- See page 99 for color options



922-B6 6' Savannah Bench, bow, black

921/922 | SAVANNAH BENCH

- Available with back (922) and **NEW** without back (921)
- Standard in UltraCoat® thermoplastic
- Powder coat available for an upcharge
- 2" x 2" all MIG welded square tube frame
- All stainless steel hardware
- Portable and/or surface mount
- See page 99 for color options
- Personalize this product with our customization options

|               |        |        |        |        |
|---------------|--------|--------|--------|--------|
| <b>4 FOOT</b> | 922-B4 | 922-M4 | 922-S4 | 921-S4 |
| <b>6 FOOT</b> | 922-B6 | 922-M6 | 922-S6 | 921-S6 |
| <b>8 FOOT</b> | 922-B8 | 922-M8 | 922-S8 | 921-S8 |



SV-S32FT Trash Receptacle, slat, black

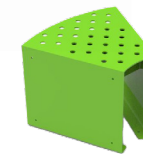
SV-32 | SAVANNAH RECEPTACLE

- 32 gallon capacity
- 29" square x 33-1/2" high
- Standard in UltraCoat® thermoplastic
- Powder coat available for an upcharge
- Lid and liner included
- 2" x 2" all MIG welded square tube frame
- Portable and/or surface mount
- See page 99 for color options

|                        |          |          |          |
|------------------------|----------|----------|----------|
| <b>FLAT TOP LID</b>    | SV-B32FT | SV-M32FT | SV-S32FT |
| <b>ASH URN LID</b>     | SV-B32AU | SV-M32AU | SV-S32AU |
| <b>RAIN BONNET LID</b> | SV-B32RB | SV-M32RB | SV-S32RB |



15-P6 Pasadena Bench, ultra silver metallic



14-P2 Pasadena Bench, spring green

14/15 | PASADENA BENCH

- 2', 4, and 6' lengths available in straight bench (15)
- 2' length available in wedge bench (14)
- Formed 1/4" steel plate with precision punched perforated pattern
- Portable and/or surface mount
- See page 99 for color options

|                  | 2 FOOT | 4 FOOT | 6 FOOT |
|------------------|--------|--------|--------|
| <b>14 SERIES</b> | 14-P2  |        |        |
| <b>15 SERIES</b> | 15-P2  | 15-P4  | 15-P6  |

Endless Configuration Possibilities!



16-P36RB Pasadena Receptacle, ultra blue

16 | PASADENA RECEPTACLE

- 36 gallon capacity
- Features lockable side door
- Fully welded with powder coated finish
- Formed 1/4" steel plate with precision punched perforated pattern.
- Portable and/or surface mount
- Lid and liner included
- See page 99 for color options

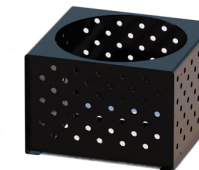
| FLAT TOP | ASH URN  | RAIN BONNET |
|----------|----------|-------------|
| 16-P36FT | 16-P36AU | 16-P36RB    |



18-P2 Pasadena Bike Rack, black

18 | PASADENA BIKE RACK

- 2 bike capacity
- Fully welded with powder coated finish
- Formed 1/4" steel plate with precision punched perforated pattern.
- 1/4" thick bicycle locking plate
- Portable and/or surface mount
- See page 99 for color options



17-SQP Pasadena Planter, black

17 | PASADENA PLANTER

- 26" W x 18" H high
- Fully welded with powder coated finish
- Formed 1/4" steel plate with precision punched perforated pattern.
- Portable and/or surface mount
- Liner included
- See page 99 for color options

HUNTINGTON  
COLLECTION



53-HX6 6' Huntington Bench, spring green



52-HX6 6' Huntington Bench without Back, Spartan Bronze

52/53 | HUNTINGTON BENCH

- 2', 4', 6' and 8' lengths available
- Fully welded with powder coated finish
- 1-1/2" square tubing
- Available with (53) and without back (52)
- Portable and/or surface mount
- See page 99 for color options

|                  | 2 FOOT | 4 FOOT | 6 FOOT | 8 FOOT |
|------------------|--------|--------|--------|--------|
| <b>52 SERIES</b> | —      | 52-HX4 | 52-HX6 | 52-HX8 |
| <b>53 SERIES</b> | 53-HX2 | 53-HX4 | 53-HX6 | 53-HX8 |



50SM-HX Huntington Table with 4 Chairs, Spartan bronze

50 | HUNTINGTON TABLE WITH 4 CHAIRS

- Solid powder coated table top and includes four 2' Huntington Chairs (53)
- Table features 4" x 4" structural post
- All MIG welded
- Chairs are portable and/or surface mount, table is surface mount only
- See page 99 for color options

| TABLE WITH 4 CHAIRS | CHAIR  |
|---------------------|--------|
| 50SM-HX             | 53-HX2 |



88SM-S8 Hexagon Tree Bench without Back, Spartan bronze

88/89 | HEXAGON TREE BENCH

- 8' (4' I.D.) or 9' lengths (5' I.D.) available
- Powder coated finish
- 4" x 4" structural post supports
- Available with (89) or without back (88) and can be mounted inground (S) or surface mounted (SM)
- See page 99 for color options

|               | 8 FOOT  | 88SM-S8 | 88S-S8  | 89SM-S8 | 89S-S8 |
|---------------|---------|---------|---------|---------|--------|
| <b>9 FOOT</b> | 88SM-S9 | 88S-S9  | 89SM-S9 | 89S-S9  |        |



51-HXFT Huntington Receptacle, flat top lid, Spartan bronze with custom backing

51-HX | HUNTINGTON RECEPTACLE

- 32 gallon capacity
- Powder coated finish
- Inner shield can be powder coated in a different color
- 1" square steel tubing
- Top and bottom rings are 1-1/2" square steel tubing
- All MIG welded
- Portable and/or surface mount
- Lid and liner included
- See page 99 for color options

| FLAT TOP | ASH URN | RAIN BONNET |
|----------|---------|-------------|
| 51-HXFT  | 51-HXAU | 51-HXRB     |



2023/2024 | HUNTINGTON BOLLARD

- 6" width
- Available in 3' and 4' heights
- Powder coated finish
- Surface mount (SM) or inground (S)
- See page 99 for color options

|                 | 3 FOOT | 4 FOOT |
|-----------------|--------|--------|
| <b>6" width</b> | 2023   | 2024   |

PALMETTO  
COLLECTION



800-RS3 Palmetto Bench, 3-seat, black



800-RS3 Palmetto Bench, 3-seat, black

800 | PALMETTO BENCH

- 2, 3, and 4 seat options
- Powder coated finish
- Manufactured with 5/8" steel rods
- 23" wide seats
- All stainless steel hardware
- Portable (P), surface mount (SM), or inground (S)
- See page 99 for color options

| 2 SEAT  | 3 SEAT  | 4 SEAT  |
|---------|---------|---------|
| 800-RS2 | 800-RS3 | 800-RS4 |



SV-R32FT Palmetto Receptacle with Flat Top, black

SV-R32 | PALMETTO RECEPTACLE

- 32 gallon capacity
- 29" square x 33-3/16" high
- Powder coated finish
- Manufactured with 5/8" steel rods
- Portable (P) or surface mount (SM)
- Lid and liner included
- See page 99 for color options

| FLAT TOP LID | ASH URN LID | RAIN BONNET LID |
|--------------|-------------|-----------------|
| SV-R32FT     | SV-R32AU    | SV-R32RB        |

RICHMOND STEEL  
COLLECTION



82S-HS6 6' Richmond Bench without Back, black



81S-HS6 6' Richmond Bench, black

81/82 | RICHMOND BENCH

- (82) 4', 6', 8' length, (81) 6' only
- Features 3" square tubing legs
- Powder coated steel with (81) and without back (82)
- Inground (S) or surface mount (SM)
- Optional Center Arm available (C)
- See page 99 for color options
- Bench with back meets ADA requirements

| 81 BENCH | 82 BENCH |
|----------|----------|
| 81-HS6   | 82-HS6   |
| 81C-HS6  | 82C-HS6  |

63 | RICHMOND TABLE



63SM-HS6 Richmond Table, black

- 6' and 8' lengths available
- 4" x 4" x 11 ga structural steel tubing
- Stainless steel hardware
- All MIG welded
- Powder coated finish
- Inground (S) or surface mount (SM)
- See page 99 for color options

| 63 SERIES |
|-----------|
| 63-HS6    |
| 63-HS8    |
| 63H-HS8   |

2603/2604 | RICHMOND BOLLARD



| 3 FOOT | 4 FOOT |
|--------|--------|
| 2603   | 2604   |

- 6" diameter
- Available in 3' and 4' heights
- 1 and 2 Loop options available for use with chain
- Powder coated finish
- Surface mount (SM) and inground (S)
- See page 99 for color options



59SM-SH4 4' Richmond Leaning Rail, black

59 | RICHMOND LEANING RAIL

- 4', 6', and 8' lengths
- Powder coated finish
- Inground (S) or surface mount (SM)

| 4 FOOT | 6 FOOT | 8 FOOT |
|--------|--------|--------|
| 59-HS4 | 59-HS6 | 59-HS8 |

RICHMOND RECYCLED  
COLLECTION



61SM-R6 6' Richmond Bench with Back, brown recycled plastic planks, black frame



62SM-R6 6' Richmond Bench without back, cedar recycled plastic planks, black frame

61/62 | RICHMOND RECYCLED BENCH

- 6' length
- Features 3" square tubing legs
- Available with (61) and without back (62)
- Recycled plastic planks with powder coated frame
- Inground (S) or surface mount (SM)
- See page 97 for plank color options

| 61 SERIES | 61-R6 |
|-----------|-------|
| 62 SERIES | 62-R6 |

63/64 | RICHMOND RECYCLED TABLE



63-R6 6' Richmond Table, surface mount, gray recycled plastic planks, black frame

64-R6 6' Richmond Table, portable, cedar recycled plastic planks, black frame

- 6' length
- 2" x 4" recycled plastic planks
- 2-3/8" O.D. frames
- Powder coated frame
- Available as a multi pedestal
- table (63) or portable table with a walk-through design (64)
- Inground or surface mount (63) and portable (64)
- Accessible version available (64H)

| 63 SERIES | 64 SERIES | 64 SERIES 8 FT | 64 SERIES ADA 8 FT |
|-----------|-----------|----------------|--------------------|
| 63-R6     | 64-R6     | 64-R8          | 64H-R8             |

60 | RICHMOND RECYCLED RECEPTACLE



60-R34 Richmond Trash Receptacle, cedar recycled plastic planks

- 32 gallon capacity
- Recycled plastic planks with powder coated tubing
- Lid and liner included
- See page 97 for plank color options

| FLAT TOP LID | ASH URN LID | RAIN BONNET LID |
|--------------|-------------|-----------------|
| 60-R34FT     | 60-R34AU    | 60-R34RB        |



59SM-GRY4 4' Recycled Richmond Leaning Rail, gray recycled plastic planks, black frame

59 | RICHMOND RECYCLED LEANING RAIL

- 4', 6', and 8' lengths
- Recycled plastic planks with powder coated frame
- Inground (S) or surface mount (SM)

| 4 FOOT | 6 FOOT | 8 FOOT |
|--------|--------|--------|
| 59-R4  | 59-R6  | 59-R8  |

MADISON STEEL COLLECTION



72-S6 6' Madison Bench without Back, Spartan bronze metallic

MADISON IPE COLLECTION



72-16 6' Madison Bench with Ipe Wood, Spartan bronze frame

Contact us to learn about IPE Wood Maintenance



71-S6 6' Madison Bench with Powder Coated Finish, matte black

71/72/73 | MADISON BENCH

- 4', 6', and 8' lengths available
- 3/4" steel plate legs reinforced with 1/4" thick support bars
- Powder coated steel slats are 1/4" x 5"
- Available with (71) and without back (73)
- Without back option also available without armrests (72)
- Portable and/or surface mount
- See page 99 for color options

|                  | 4 FOOT | 6 FOOT | 8 FOOT |
|------------------|--------|--------|--------|
| <b>71 SERIES</b> | 71-S4  | 71-S6  | 71-S8  |
| <b>72 SERIES</b> | 72-S4  | 72-S6  | 72-S8  |
| <b>73 SERIES</b> | 73-S4  | 73-S6  | 73-S8  |



71-16 6' Madison Bench with Ipe Wood, Spartan bronze frame

71/72/73 | MADISON IPE BENCH

- 4', 6', and 8' lengths available
- Ipe wood planks with powder coated steel frame
- 3/4" steel plate legs reinforced with 1/4" thick support bars
- 1-1/4" x 6" sealed Ipe wood planks
- Available with (71) and without back (73)
- Without back option also available without armrests (72)
- Portable and/or surface mount

|                  | 4 FOOT | 6 FOOT | 8 FOOT |
|------------------|--------|--------|--------|
| <b>71 SERIES</b> | 71-14  | 71-16  | 71-18  |
| <b>72 SERIES</b> | 72-14  | 72-16  | 72-18  |
| <b>73 SERIES</b> | 73-14  | 73-16  | 73-18  |

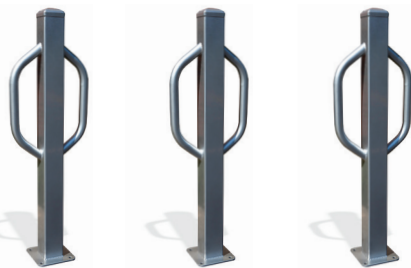


74-16 6' Madison Table with Ipe Wood, Spartan bronze frame

74 | MADISON IPE TABLE

- 4', 6', and 8' lengths available
- Ipe wood planks with powder coated steel frame
- 3/4" steel plate legs reinforced with 1/4" thick support bars
- 1-1/4" x 6" sealed Ipe wood planks
- Portable and/or surface mount
- Pedestal style table offers easy walk through access.

|                  | 4 FOOT | 6 FOOT | 8 FOOT |
|------------------|--------|--------|--------|
| <b>74 SERIES</b> | 74-14  | 74-16  | 74-18  |



2013/2014 MADISON BOLLARD

- 4" width
- Available in 3' and 4' heights
- 1 and 2 Loop options available for use with chain
- Powder coated finish
- Surface mount (SM) or inground (S)
- See page 99 for color options

|                 | 3 FOOT | 4 FOOT |
|-----------------|--------|--------|
| <b>4" width</b> | 2013   | 2014   |



75-36RB Madison Receptacle with Ipe wood, Spartan bronze frame with matching rain bonnet lid

75 | MADISON IPE RECEPTACLE

- 36 Gallon capacity
- Ipe wood planks with powder coated steel frame
- Frame is made from 1/4" thick steel plates and 12 gauge rolled steel
- 1" x 3-1/2" sealed Ipe wood planks
- Portable and/or surface mount
- All stainless steel hardware
- Lid and liner included

| FLAT TOP LID | ASH URN LID | RAIN BONNET LID |
|--------------|-------------|-----------------|
| 75-36FT      | 75-36AU     | 75-36RB         |

DURHAM STEEL COLLECTION



99-S6 6' Durham Bench with Back, vertical slats, ultra metallic silver

DURHAM RECYCLED COLLECTION



99-R6 Durham Bench with Back, cedar recycled plastic planks, Spartan bronze frame



99-S6 Durham Bench with Back, vertical slats, black

99 | DURHAM BENCH WITH BACK

- 4' and 6' lengths available
- Available in horizontal or vertical metal slats
- Powder coated finish
- Cast aluminum frame
- Portable and/or surface mount
- See page 99 for color options
- Meets ADA requirements

| 4 FOOT | 6 FOOT |
|--------|--------|
| 99-HS4 | 99-HS6 |



99-R Durham Recycled Bench with back, gray recycled plastic planks, black frame

99 | DURHAM RECYCLED BENCH WITH BACK

- 4' and 6' lengths available
- Recycled plastic planks with powder coated frame
- Cast aluminum frame
- Portable and/or surface mount
- See page 97 for plank color options

| 4 FOOT | 6 FOOT |
|--------|--------|
| 99-R4  | 99-R6  |



98-S4 4' Durham Bench without Back, vertical slats, black

98 | DURHAM BENCH WITHOUT BACK

- 4' and 6' lengths available
- Available in horizontal or vertical metal slats
- Powder coated finish
- Cast aluminum frame
- Portable and/or surface mount
- See page 99 for color options

| 4 FOOT | 6 FOOT |
|--------|--------|
| 98-S4  | 98-S6  |



98-R Durham Recycled Bench without back, gray recycled plastic planks, black frame

98 | DURHAM RECYCLED BENCH WITHOUT BACK

- 4' and 6' lengths available
- Recycled plastic planks with powder coated frame
- Cast aluminum frame
- Portable and/or surface mount
- See page 97 for plank color options

| 4 FOOT | 6 FOOT |
|--------|--------|
| 98-R4  | 98-R6  |



2633/2833 | DURHAM BOLLARD

- Available in 6" or 8" diameters
- Available in 3' and 4' heights
- Powder coated finish
- Surface mount (SM) or inground (S)
- See page 99 for color options

|             | 3 FOOT | 4 FOOT |
|-------------|--------|--------|
| 6" diameter | 2633   | 2634   |
| 8" diameter | 2833   | 2834   |

CHARLESTON STEEL  
COLLECTION



964-S6 6' Charleston Bench with Back, slat, black

CHARLESTON RECYCLED  
COLLECTION



964-R6 6' Charleston Bench, gray recycled plastic planks, black frame



964-S6 6' Charleston Bench with Back, slat, green

964 | CHARLESTON BENCH WITH BACK

- 4', 6', and 8' lengths
- UltraCoat® thermoplastic finish
- 1-1/2" thick cast aluminum frame
- All stainless steel hardware
- Portable and/or surface mount
- Use code (AO) for add-on sections
- Optional Center Arm Kit (964-ARM) sold separately
- See page 99 for color options and 98 for pattern options

| 4 FOOT  | 6 FOOT  | 8 FOOT  |
|---------|---------|---------|
| 964-V4  | 964-V6  | 964-V8  |
| 964-P4  | 964-P6  | 964-P8  |
| 964-FB4 | 964-FB6 | 964-FB8 |
| 964-W4  | 964-W6  | 964-W8  |
| 964-S4  | 964-S6  | 964-S8  |



964-R6 6' Charleston Recycled Bench with back, cedar recycled plastic planks, black frame

964 | CHARLESTON RECYCLED BENCH WITH BACK

- 6' and 8' lengths
- Recycled planks with thermoplastic finish on frame
- 1-1/2" thick cast aluminum endframe
- All stainless steel hardware
- Portable and/or surface mount
- See page 97 for plank color options and page 99 for color options

| 6 FOOT | 8 FOOT |
|--------|--------|
| 964-R6 | 964-R8 |



968-W4 4' Charleston Bench without Back, wave, green

968 | CHARLESTON BENCH WITHOUT BACK

- 4', 6', and 8' lengths
- UltraCoat® thermoplastic finish
- 1-1/2" thick cast aluminum frame
- All stainless steel hardware
- Portable and/or surface mount
- Use code (AO) for add-on sections
- See page 99 for color options and 98 for pattern options

| 4 FOOT  | 6 FOOT  | 8 FOOT  |
|---------|---------|---------|
| 968-V4  | 968-V6  | 968-V8  |
| 968-P4  | 968-P6  | 968-P8  |
| 968-FB4 | 968-FB6 | 968-FB8 |
| 968-W4  | 968-W6  | 968-W8  |
| 968-S4  | 968-S6  | 968-S8  |



968-R6 6' Charleston Recycled Bench without back, cedar recycled plastic planks, black frame

968 | CHARLESTON RECYCLED BENCH WITHOUT BACK

- 6' and 8' lengths
- Recycled planks with thermoplastic finish on frame
- 1-1/2" thick cast aluminum endframe
- All stainless steel hardware
- Portable and/or surface mount
- See page 97 for plank color options and page 99 for color options

| 6 FOOT | 8 FOOT |
|--------|--------|
| 968-R6 | 968-R8 |



CH-32RB Charleston Receptacle, beige

CH | CHARLESTON RECEPTACLE

- Decorative rosettes around the top of the receptacle
- Thermoplastic finish
- 3" x 3/16" steel slats
- Lid and liner included
- Portable and/or surface mount, IG mounting kit sold separately
- Also available in recycled
- See page 99 for color options



CH-R32FT Charleston Receptacle, cedar recycled plastic planks, black frame

CH | CHARLESTON RECEPTACLE

- Decorative rosettes around the top of the receptacle
- Thermoplastic finish on frame
- 32 gallon capacity
- 2" x 4" recycled plastic planks
- Lid and liner included
- Portable and/or surface mount, IG mounting kit sold separately
- Also available in steel
- See page 97 for plank color options and page 99 for color options

|          | FLAT TOP | ASH URN  | RAIN BONNET |
|----------|----------|----------|-------------|
| RECYCLED | CH-R32FT | CH-R32AU | CH-R32RB    |
| STEEL    | CH-S32FT | CH-S32AU | CH-S32RB    |

PHOENIX STEEL  
COLLECTION

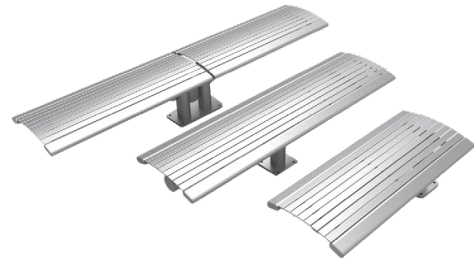


66SM-HS4 4' Phoenix Bench, silver vein

PHOENIX RECYCLED  
COLLECTION



69SM-R6 6' Phoenix Bench, gray recycled plastic planks, black frame



68-SM-HS4 8' Phoenix Bench, ultra silver metallic  
69-HS6 6' Phoenix Bench, ultra silver metallic  
66-HS4 4' Phoenix Bench, ultra silver metallic

66/68/69 | PHOENIX BENCH

- 4', 6', and 8' lengths
- 4" structural steel tubing frame
- Powder coated steel
- All stainless steel hardware
- All MIG Welded
- Inground or surface mount
- See page 99 for steel color options

| 4 FOOT | 6 FOOT | 8 FOOT |
|--------|--------|--------|
| 66-HS4 | 69-HS6 | 68-HS4 |



69SM-R6 6' Phoenix Bench, cedar recycled plastic planks, black frame

66/68/69 | PHOENIX BENCH

- 4', 6', and 8' lengths
- 4" structural steel tubing frame
- Recycled plastic planks with powder coated frame
- All stainless steel hardware
- All MIG Welded
- Inground (S) or surface mount (SM)
- See page 99 for steel color options and page 97 for recycled plastic color options.

| 4 FOOT | 6 FOOT | 8 FOOT |
|--------|--------|--------|
| 66-R4  | 69-R6  | 68-R4  |



65SM-HS6 6' Phoenix Table, ultra silver metallic

65 | PHOENIX TABLE

- 6' table top with 4' seats
- 4" structural steel tubing frame
- Powder coated steel
- All stainless steel hardware
- All MIG Welded
- Inground (S) or surface mount (SM)
- See page 99 for steel color options

| 6 FOOT |
|--------|
| 65-HS6 |



65SM-R6 6' Phoenix Table, cedar recycled plastic planks, black frame

65 | PHOENIX TABLE

- 6' table top with 4' seats
- 4" structural steel tubing frame
- Recycled plastic planks with powder coated frame
- All stainless steel hardware
- All MIG Welded
- Inground (S) or surface mount (SM)
- See page 99 for steel color options and page 97 for recycled plastic color options.

| 6 FOOT |
|--------|
| 65-R6  |





OXFORD  
COLLECTION

86-S6 6' Oxford Bench with Back, ultra blue



86-S6 6' Oxford Bench with Back, ultra blue

86 | OXFORD BENCH WITH BACK

- 4' and 6' lengths
- Fully welded design
- UltraCoat® thermoplastic finish
- 7 gauge steel seat with 3/8" steel plate legs
- Portable and/or surface mount
- See page 99 for color options
- Personalize this product by adding a name plate, awareness ribbon or other personal touches.

| 4 FOOT | 6 FOOT |
|--------|--------|
| 86-S4  | 86-S6  |



OXFORD  
COLLECTION

238-SR6U 6' Oxford Table, black with black frame



238-SR6U 6' Oxford Table with umbrella hole, ultra blue with black frame

238 | OXFORD TABLE

- 6' and 8' lengths
- Thermoplastic finish with powder coated frame
- 2-3/8" O.D. x 11 gauge structural steel tubing
- All MIG welded frame with walk-through design
- All stainless steel hardware
- Portable and/or surface mount
- Umbrella hole option (U)
- See page 99 for color options

|              | 6 FOOT   | 8 FOOT   | 8 FOOT ADA |
|--------------|----------|----------|------------|
| W/O UMBRELLA | 238-SR6  | 238-SR8  | 238H-SR8   |
| W/ UMBRELLA  | 238-SR6U | 238-SR8U | 238H-SR8U  |



85-S6 6' Oxford Bench without Back, ultra blue

85 | OXFORD BENCH WITHOUT BACK

- 4' and 6' lengths
- Fully welded design
- UltraCoat® thermoplastic finish
- 7 gauge steel seat with 3/8" steel plate legs
- Portable and/or surface mount
- See page 99 for color options

| 4 FOOT | 6 FOOT |
|--------|--------|
| 85-S4  | 85-S6  |



OX-36FT Oxford Receptacle, ultra blue vertical slat with matching flat top lid

OX-36 | OXFORD RECEPTACLE

- 36 gallon capacity
- Thermoplastic finish
- Slat design with flared top
- All MIG welded
- Lid and liner included
- See page 99 for color options

| FLAT TOP | ASH URN | RAIN BONNET |
|----------|---------|-------------|
| OX-36FT  | OX-36AU | OX-36RB     |

JACKSON  
COLLECTION



96-S6 6' Jackson Bench, orange  
JK-36FT Jackson Receptacle, orange, matching flat top lid



97-S6 6' Jackson Table, black slat pattern, ultra silver frame



96-S6 6' Jackson Bench, black slat pattern, black frame

96 | JACKSON BENCH WITH BACK

- Available in 4', 6', and 8' lengths
- Powder coated frame and slats
- 1-1/2" square tubing frame
- All stainless steel hardware
- Portable and/or surface mount
- See page 99 for color options
- Seating pattern: slat only

| 4 FOOT | 6 FOOT | 8 FOOT |
|--------|--------|--------|
| P96-S4 | P96-S6 | P96-S8 |



JK-36FT Jackson Receptacle, green vertical slat with matching flat top lid

JK-36 | JACKSON RECEPTACLE

- 36 gallon capacity
- Only available in powder coated finish
- 1/8" x 2" steel flat bar
- All MIG welded frame
- Portable and/or surface mount
- Lid and liner included
- See page 99 for color options

| FLAT TOP | ASH URN | RAIN BONNET |
|----------|---------|-------------|
| JK-36FT  | JK-36AU | JK-36RB     |



95-S6 6' Jackson Bench, black slat pattern, black frame

95 | JACKSON BENCH WITHOUT BACK

- Available in 4', 6', and 8' lengths
- Powder coated frame and slats
- 1-1/2" square tubing frame
- All stainless steel hardware
- Portable and/or surface mount
- See page 99 for color options
- Seating pattern: slat only

| 4 FOOT | 6 FOOT | 8 FOOT |
|--------|--------|--------|
| P95-S4 | P95-S6 | P95-S8 |



RD2418-JK Jackson Planter, black

RD2418-JK | JACKSON PLANTER

- 27" wide x 24" high planter
- Powder coated finish 1/8" x 2" steel flat bar
- All MIG welded
- Portable with inground and surface mount kit available—sold separately
- 01-05-0212 liner sold separately
- See page 99 for color options



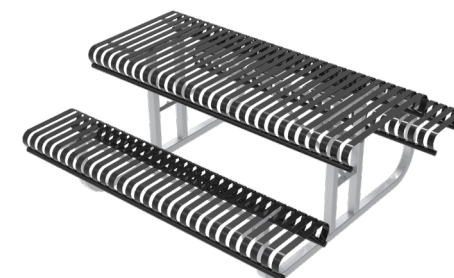
96-S6-CAPQ 6' Jackson Breast Cancer Awareness Bench, Traditional Plaque Option

96CA | JACKSON AWARENESS BENCH

- Available in 6' length
- Available with or without plaque option
- Portable and/or surface mount
- Powder coated finish, contact us to learn more



| WITH PLAQUE | WITHOUT PLAQUE |
|-------------|----------------|
| 96-S6-CAPQ  | 96-S6-CA       |



97-S6 6' Jackson Table, black slat pattern, ultra silver frame

97 | JACKSON TABLE

- Available in 6' and 8' lengths
- Powder coated frame and slats
- 1-1/2" square tubing frame
- All stainless steel hardware
- Portable and/or surface mount

| 6 FOOT | 8 FOOT |
|--------|--------|
| 97-S6  | 97-S8  |
|        | 97H-S8 |

ULTRACOAT COLLECTION  
—  
BENCHES



942SM-VR6 Extra Heavy Duty Bench without Back, inground (S), red diamond rolled pattern, black frame



940P-SR6 6' Extra Heavy-Duty Bench with Back, portable, green slat pattern, green frame



940P-P6 6' Extra Heavy-Duty Bench with Back, portable, green perforated pattern, black frame



940SM-SR6 6' Extra Heavy-Duty Bench with Back, surface mount, blue NEW slat pattern, black frame

940 | EXTRA HEAVY-DUTY BENCH WITH BACK

- Available in 4', 6', 8', 10', and 15' lengths
- 12" seating standard or optional deluxe (D) 15" seating
- Thermoplastic finish with powder coated frame
- 2-3/8" O.D. all MIG welded frame
- 1" O.D. brace (Portable frame only)
- All stainless steel hardware
- Portable (P), inground (S), surface mount (SM), or wall mount (WM)
- Seating pattern options: perforated, perforated rolled, diamond, diamond rolled, NEW slat pattern
- Cover Plates (M-Cover Plates) available for inground (S) and surface mount (SM)
- Optional Center Arm Kit (940-ARM) sold separately
- Anti skateboard tab kit available (01-04-0400)
- See page 99 for color options and 98 for seating patterns

| 6 FOOT | 12" seating | (D) 15" seating     |
|--------|-------------|---------------------|
|        | 940-V6      | 940-DV6             |
|        | 940-P6      | 940-DP6             |
|        | 940-SR6     | 940-FV (frame only) |

| 8 FOOT | 12" seating | (D) 15" seating     |
|--------|-------------|---------------------|
|        | 940-V8      | 940-DV8             |
|        | 940-P8      | 940-DP8             |
|        | 940-SR8     | 940-FV (frame only) |

| 10 FOOT | 12" seating | (D) 15" seating           |
|---------|-------------|---------------------------|
|         | 940-V10     | 940-DV10                  |
|         | 940-P10     | 940-DP10                  |
|         |             | 940-FV10 (10' frame only) |

| 15 FOOT | 12" seating | (D) 15" seating           |
|---------|-------------|---------------------------|
|         | 940-V15     | 940-DV15                  |
|         | 940-P15     | 940-DP15                  |
|         |             | 940-FV15 (15' frame only) |



942S-V15 15' Extra Heavy-Duty Bench without Back, inground, blue diamond pattern, black frame



965SM-W4 4' Contour Bench with Back, surface mount, black wave pattern, Spartan bronze frame



942SM-P6 6' Extra Heavy-Duty Bench without Back, surface mount, green perforated pattern, black frame

942 | EXTRA HEAVY-DUTY BENCH WITHOUT BACK

- Available in 4', 6', 8', 10', and 15' lengths
- 12" seating standard or optional deluxe (D) 15" seating
- Thermoplastic finish with powder coated frame
- 2-3/8" O.D. all MIG welded frame
- Anti skateboard tab kit available (01-04-0400)
- 1" O.D. brace (Portable frame only)
- All stainless steel hardware
- Portable (P), inground (S), surface mount (SM), or wall mount (WM)
- Seating pattern options: perforated, perforated rolled, diamond, diamond rolled, **NEW** slat pattern
- Cover Plates (M-Cover Plates) available for inground (S) and surface mount (SM)
- Optional Center Arm Kit (942-ARM) sold separately
- See page 99 for color options and 98 for seating patterns

| 6 FOOT  | 12" seating         | (D) 15" seating |
|---------|---------------------|-----------------|
|         | 942-V6              | 942-DV6         |
| 942-P6  | 942-DP6             |                 |
| 942-SR6 | 942-FV (frame only) |                 |

| 8 FOOT  | 12" seating         | (D) 15" seating |
|---------|---------------------|-----------------|
|         | 942-V8              | 942-DV8         |
| 942-P8  | 942-DP8             |                 |
| 942-SR8 | 942-FV (frame only) |                 |

| 10 FOOT  | 12" seating               | (D) 15" seating |
|----------|---------------------------|-----------------|
|          | 942-V10                   | 942-DV10        |
| 942-P10  | 942-DP10                  |                 |
| 942-SR10 | 942-FV10 (10' frame only) |                 |

| 15 FOOT  | 12" seating               | (D) 15" seating |
|----------|---------------------------|-----------------|
|          | 942-V15                   | 942-DV15        |
| 942-P15  | 942-DP15                  |                 |
| 942-SR15 | 942-FV15 (15' frame only) |                 |



965SM-FB6 6' Contour Bench with Back, surface mount, ultra blue fiesta pattern, black frame

965 | CONTOUR BENCH WITH BACK

- 4', 6', and 8' lengths
- Add-ons optional for 4', 6', or 8' lengths
- Thermoplastic finish with powder coated frame
- 2-3/8" O.D. frame
- All stainless steel hardware
- Portable (P), inground (S), or surface mount (SM)
- Cover Plate (M-Cover Plates) available for inground (S) or surface mount (SM)
- Optional Center Arm Kit (965-ARM) sold separately
- See page 99 for color options and 98 for seating patterns

| 4 FOOT  | 6 FOOT  | 8 FOOT  |
|---------|---------|---------|
| 965-V4  | 965-V6  | 965-V8  |
| 965-P4  | 965-P6  | 965-P8  |
| 965-FB4 | 965-FB6 | 965-FB8 |
| 965-W4  | 965-W6  | 965-W8  |
| 965-S4  | 965-S6  | 965-S8  |



961SM-V6 6' Single-Sided Bollard Bench, surface mount, red diamond pattern, black frame

961/962 | BOLLARD STYLE BENCH

- Available in 6' and 8' lengths
- Thermoplastic finish with powder coated frame
- 4" bollard-style square post
- 2-3/8" O.D. all MIG welded seat support arm
- All stainless steel hardware
- Available single sided (961) or double sided (962)
- Inground (S) or surface mount (SM)
- Seating pattern options: perforated, perforated rolled, diamond, diamond rolled
- See page 99 for color options

| DOUBLE-SIDED (962) | 6 FOOT  | 8 FOOT |
|--------------------|---------|--------|
|                    | 962-V6  | 962-V8 |
| 962-VR6            | 962-VR8 |        |
| 962-P6             | 962-P8  |        |
| 962-PR6            | 962-PR8 |        |

| SINGLE-SIDED (961) | 6 FOOT  | 8 FOOT |
|--------------------|---------|--------|
|                    | 961-V6  | 961-V8 |
| 961-VR6            | 961-VR8 |        |
| 961-P6             | 961-P8  |        |
| 961-PR6            | 961-PR8 |        |



966SM-P6 6' Contour Bench without Back, surface mount, green perforated pattern, black frame

966 | CONTOUR BENCH WITHOUT BACK

- 4', 6', and 8' lengths
- Add-ons optional for 4', 6', or 8' lengths
- Thermoplastic finish with powder coated frame
- 2-3/8" O.D. frame
- All stainless steel hardware
- Portable (P), inground (S), or surface mount (SM)
- Cover Plate (M-Cover Plates) available for inground (S) or surface mount (SM)
- See page 99 for color options and 98 for seating patterns

| 4 FOOT  | 6 FOOT  | 8 FOOT  |
|---------|---------|---------|
| 966-V4  | 966-V6  | 966-V8  |
| 966-P4  | 966-P6  | 966-P8  |
| 966-FB4 | 966-FB6 | 966-FB8 |
| 966-W4  | 966-W6  | 966-W8  |
| 966-S4  | 966-S6  | 966-S8  |



950-V6 6' Capri Bench, portable, blue diamond rolled pattern, blue frame, custom logo and letter



975SM-W6 6' Contour Cantilevered Bench With Back, surface mount, burgundy perforated pattern, beige frame, custom logo and letter

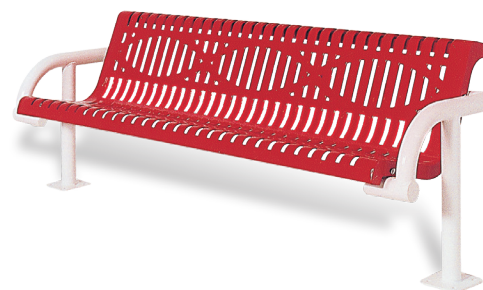


950P-V6 6' Capri Bench, portable, black diamond rolled pattern, black frame

950 | CAPRI BENCH

- Available in 4', 6', and 8' lengths
- Thermoplastic finish with powder coated frame
- Heavy-duty 2-3/8" O.D. all MIG welded frame
- All stainless steel hardware
- Portable (P), inground (S), or surface mount (SM)
- See page 99 for color options and 98 for seating patterns

| 4 FOOT  | 6 FOOT  | 8 FOOT  |
|---------|---------|---------|
| 950-V4  | 950-V6  | 950-V8  |
| 950-P4  | 950-P6  | 950-P8  |
| 950-FB4 | 950-FB6 | 950-FB8 |
| 950-W4  | 950-W6  | 950-W8  |
| 950-S4  | 950-S6  | 950-S8  |



975SM-W6 6' Contour Cantilevered Bench with Back, surface mount, red wave pattern, white frame

975 | CONTOUR CANTILEVERED BENCH WITH BACK

- Available in 4', 6', and 8' lengths and can be extended with 4', 6', or 8' add-on (AO) benches
- Thermoplastic finish with powder coated frame
- Heavy-duty 2-3/8" O.D. all MIG welded frame
- All stainless steel hardware
- Inground (S) or surface mount (SM)
- See page 99 for color options and 98 for seating patterns
- Optional Center Arm Kit (965-ARM) sold separately

| 4 FOOT  | 6 FOOT  | 8 FOOT  |
|---------|---------|---------|
| 975-V4  | 975-V6  | 975-V8  |
| 975-P4  | 975-P6  | 975-P8  |
| 975-FB4 | 975-FB6 | 975-FB8 |
| 975-W4  | 975-W6  | 975-W8  |
| 975-S4  | 975-S6  | 975-S8  |

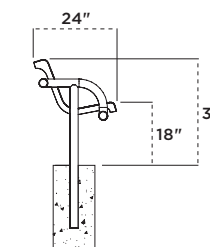
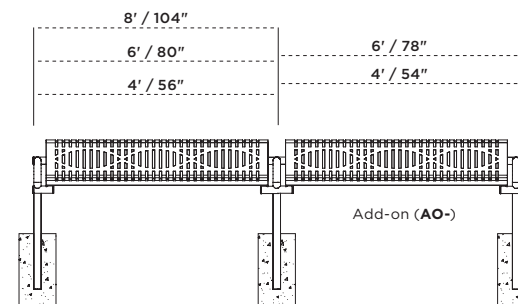


963-V6 Contour Bench, portable, blue diamond pattern, black frame

963 | CONTOUR BENCH

- Available in 4' and 6' lengths
- Thermoplastic finish with powder coated frame
- Heavy-duty 2-3/8" O.D. all MIG welded frame
- All stainless steel hardware
- Portable (P), inground (S), or surface mount (SM)
- See page 99 for color options

| 4 FOOT | 6 FOOT |
|--------|--------|
| 963-V4 | 963-V6 |



LEARN MORE

See page 4 to learn more about our customization and personalization options.



967-V6 Contour Bench Swing, blue diamond pattern, black frame



967-V6 6' Contour Bench Swing, blue diamond pattern, black frame

967 | CONTOUR BENCH SWING

- Available in 4' and 6' lengths
- 2-3/8" O.D. frame
- Thermoplastic finish with powder coated frame
- Uncoated galvanized swing chain
- Cover Plate (M-Cover Plates) available
- All stainless steel hardware
- Inground (S) mount only
- See page 99 for color options and 98 for seating patterns

| 4 FOOT  | 6 FOOT  |
|---------|---------|
| 967-V4  | 967-V6  |
| 967-P4  | 967-P6  |
| 967-FB4 | 967-FB6 |
| 967-W4  | 967-W6  |
| 967-S4  | 967-S6  |



932SM-P6 6' Mall Bench, surface mount, blue perforated pattern, black frame



934SM-V6 6' Geometric Mall Bench, surface mount, green diamond pattern, black frame

934 | GEOMETRIC MALL BENCH

- Available in 6' and 8' lengths
- 6' Bench has 32" square center, 8' Bench has 56" square center
- 20" deep seat with 4" tall outside border
- Thermoplastic finish with powder coated frame
- 4" bollard-style square tubing
- All stainless steel hardware
- Inground (S) or surface mount (SM)
- Seating pattern options: perforated, diamond
- See page 99 for color options

| 6 FOOT | 8 FOOT |
|--------|--------|
| 934-V6 | 934-V8 |
| 934-P6 | 934-P8 |

321/322 | CANOPY BENCH

- 6' lengths available one sided (321) or double sided (322) with canopy
- Thermoplastic finish with powder coated frame
- 4" x 4" square all MIG welded frame and support arms
- Canopy offers protection from the sun
- All stainless steel hardware
- Inground mount only
- Pattern options: perforated, diamond
- See page 99 for color options

| SINGLE SIDED | DOUBLE SIDED |
|--------------|--------------|
| 321-V6       | 322-V6       |
| 321-P6       | 322-P6       |

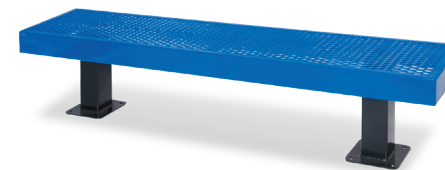


321-V6 6' Single-Sided Canopy Bench, Inground Mount, ultra blue diamond pattern, black frame

932 | MALL BENCH

- Available in 4', 6', and 8' lengths
- 15" deep seat with 4" tall outside border
- Thermoplastic finish with powder coated frame
- All stainless steel hardware
- Inground (S) or surface mount (SM)
- Seating pattern options: perforated, diamond, wave
- See page 99 for color options

| 4 FOOT | 6 FOOT | 8 FOOT |
|--------|--------|--------|
| 932-V4 | 932-V6 | 932-V8 |
| 932-P4 | 932-P6 | 932-P8 |
| 932-W4 | 932-W6 | 932-W8 |



932SM-V6 6' Mall Bench, surface mount, blue diamond pattern, black frame

ULTRACOAT COLLECTION  
—  
TABLES



358-RDSD 4-Seat Round Table with social distancing silhouette accessory (learn more on pg. 89)



358-RDV 46" Round Table, ultra blue diamond pattern, ultra blue frame



358-RDV 46" Round Table, green diamond pattern, black frame

358 | SQUARE, OCTAGON, & ROUND TABLE

- 46" square, octagon, or round table with 1-9/16" I.D. umbrella hole standard
- Thermoplastic finish with powder coated frame
- 1-5/8" O.D. frame with 1" O.D. brace
- All MIG welded frame with walk-through design
- All stainless steel hardware
- Solid top option now available
- Portable and/or surface mount
- Game Top option available (add GT)
- See page 99 for color options and 98 for patterns

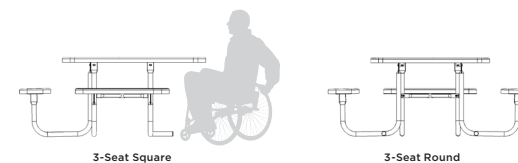
| SQUARE | SOLID-TOP SQUARE | OCTAGON | ROUND   | SOLID-TOP ROUND |
|--------|------------------|---------|---------|-----------------|
| 358-V  | 358-SD           | 358-OV  | 358-RDV | 358-RDSD        |
| 358-P  | —                | 358-OP  | 358-RDP | —               |
| 358-VR | —                | 358-OVR | —       | —               |
| 358-PR | —                | 358-OPR | —       | —               |



358H | 3-SEAT TABLES

- Open end allows for wheelchair access
- All stainless steel hardware
- Surface mount recommended
- See page 99 for color options and 98 for seating patterns

| SQUARE  | SQUARE W/ GAME TOP | OCTAGON  | OCTAGON W/ GAME TOP | ROUND    | ROUND W/ GAME TOP |
|---------|--------------------|----------|---------------------|----------|-------------------|
| 358H-V  | 358H-V-GT          | 358H-OV  | 358H-OV-GT          | 358H-RDV | 358H-RDV-GT       |
| 358H-P  | 358H-P-GT          | 358H-OP  | 358H-OP-GT          | 358H-RDP | 358H-RDP-GT       |
| 358H-VR | 358H-VR-GT         | 358H-OVR | 358H-OVR-GT         | —        | —                 |
| 358H-PR | 358H-PR-GT         | 358H-OPR | 358H-OPR-GT         | —        | —                 |



3-Seat Square

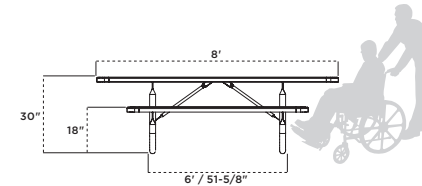
3-Seat Round



238-P6 6' Extra Heavy-Duty Rectangular Table, green perforated pattern, black frame



238H-V8 8' Double-Sided ADA Accessible Table, red diamond pattern, black frame



238H | EXTRA HEAVY-DUTY 8' DOUBLE SIDED ACCESSIBLE TABLE

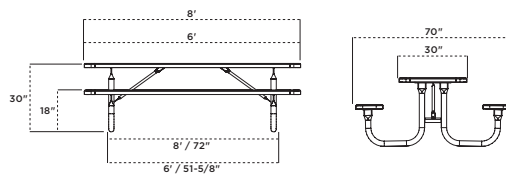
- Available in an 8' ADA Accessible option with double-sided accessibility
- Thermoplastic finish with powder coated frame
- 2-3/8" O.D. frame with 1" O.D. brace
- All MIG welded frame with walk-through designs
- All stainless steel hardware
- Portable and/or surface mount
- See page 99 for color options and 98 for patterns

ADA Double-Sided

- 238H-V8
- 238H-VR8
- 238H-P8
- 238H-PR8
- 238-FV (frame only)



238-P8 8' Extra Heavy-Duty Rectangular Table, black perforated pattern, black frame



238 | EXTRA HEAVY-DUTY RECTANGULAR TABLE

- 4', 6' and 8' lengths
- Thermoplastic finish with powder coated frame
- 2-3/8" O.D. frame with 1" O.D. brace
- All MIG welded frame with walk-through designs
- All stainless steel hardware
- Portable and/or surface mount
- Umbrella hole option is available for 6' and 8' tables
- See page 99 for color options and 98 for patterns

| 4 FOOT | 6 FOOT                       | 8 FOOT                       |
|--------|------------------------------|------------------------------|
| 238-V4 | 238-V6                       | 238-V8                       |
| 238-P4 | 238-VR6                      | 238-VR8                      |
| —      | 238-P6                       | 238-P8                       |
| —      | 238-PR6                      | 238-PR8                      |
| —      | 238-FV (frame only)          | 238-FV (frame only)          |
| —      | 238-V6U (with umbrella hole) | 238-V8U (with umbrella hole) |
| —      | 238-P6U (with umbrella hole) | 238-P8U (with umbrella hole) |



238-3-V10 10' Shelter Table, brown diamond pattern, black frame

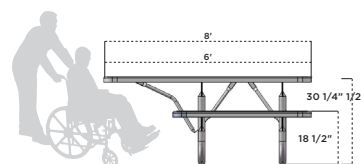
238-3 | EXTRA HEAVY-DUTY SHELTER TABLE

- Available in 10' or 12' lengths with 3 frames
- Thermoplastic finish with powder coated frame
- 2-3/8" O.D. frame with 1" O.D. brace
- All MIG welded frame with walk-through designs
- All stainless steel hardware
- Portable and/or surface mount
- Includes 2 sections and 3 legs for added support
- See page 99 for color options and 98 for patterns

| 10 FOOT, 3-FRAME      | 12 FOOT, 3-FRAME      |
|-----------------------|-----------------------|
| 238-3-V10             | 238-3-V12             |
| 238-3-P10             | 238-3-P12             |
| 238-3-FV (frame only) | 238-3-FV (frame only) |



238HS-V6 6' Extra Heavy-Duty Single Sided ADA Table, portable, green diamond pattern, black frame



238HS | EXTRA HEAVY-DUTY SINGLE-SIDED ADA TABLE

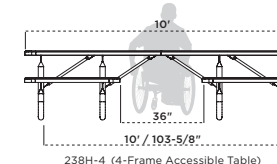
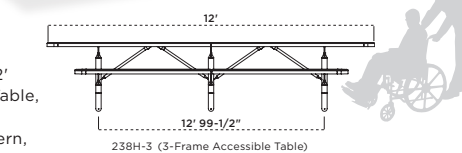
- 6' and 8' lengths
- ADA accessible
- Thermoplastic finish with powder coated frame
- 2-3/8" O.D. all MIG welded frame
- Features walk-through design
- 1" O.D. brace
- All stainless steel hardware
- See page 99 for color options and 98 for patterns

| 6 FOOT    | 8 FOOT                |
|-----------|-----------------------|
| 238HS-P6* | 238HS-V8              |
| 238HS-V6* | 238HS-VR8             |
| —         | 238HS-P8              |
| —         | 238HS-PR8             |
| —         | 238HS-FV (frame only) |

\*Anchor bolt install recommended, anchor bolts not included.



238H-3-V12 12' ADA Shelter Table, portable, red diamond pattern, black frame



238H | EXTRA HEAVY-DUTY ADA SHELTER TABLE

- Available in 10' length with 4 frames (ADA Center Access) or 12' length with 3 frames (ADA end access)
- ADA accessible
- Thermoplastic finish with powder coated frame
- 2-3/8" O.D. all MIG welded frame
- Features walk-through design
- 1" O.D. brace
- All stainless steel hardware
- Portable and/or surface mount
- See page 99 for color options and 98 for patterns

| 10 FOOT, 4-FRAME       | 12 FOOT, 3-FRAME       |
|------------------------|------------------------|
| 238H-4-V10             | 238H-3-V12             |
| 238H-4-P10             | 238H-3-P12             |
| 238H-4-FV (frame only) | 238H-3-FV (frame only) |



TABLES



158-V8 8' Heavy-Duty Rectangular Table, green diamond pattern, black frame

158 | HEAVY-DUTY RECTANGULAR TABLE

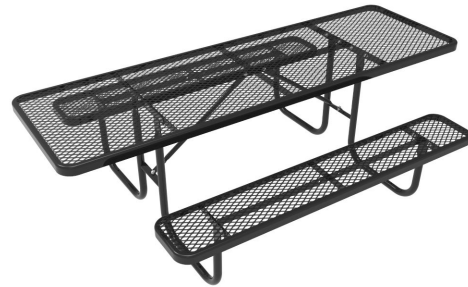
- 4', 6', and 8' lengths with walk-through design
- Thermoplastic finish with powder coated frame
- 1-5/8" O.D. all MIG welded frame
- 1" O.D. brace
- All stainless steel hardware
- Portable and/or surface mount
- See page 99 for color options and 98 for patterns

| 4 FOOT | 6 FOOT              | 8 FOOT              |
|--------|---------------------|---------------------|
| 158-V4 | 158-V6              | 158-V8              |
| 158-P4 | 158-VR6             | 158-VR8             |
| —      | 158-P6              | 158-P8              |
| —      | 158-PR6             | 158-PR8             |
| —      | 158-FV (frame only) | 158-FV (frame only) |



158-V8 8' Heavy-Duty Rectangular Table, blue diamond pattern, black frame

Great for outdoor classrooms!



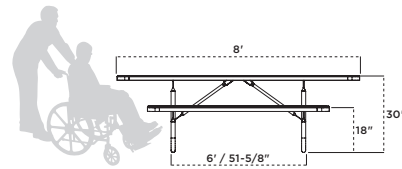
158H-V8 8' Heavy-Duty Rectangular Table, red diamond pattern, black frame

158H | HEAVY-DUTY 8' DOUBLE SIDED ADA ACCESSIBLE TABLE 

- Available in an 8' ADA accessible option with double-sided handicap accessibility
- Thermoplastic finish with powder coated frame
- 1-5/8" O.D. all MIG welded frame
- 1" O.D. brace
- All stainless steel hardware
- Portable and/or surface mount
- See page 99 for color options and 98 for patterns

ADA DOUBLE SIDED

|                     |
|---------------------|
| 158H-V8             |
| 158H-VR8            |
| 158H-P8             |
| 158-PR8             |
| 158-FV (frame only) |



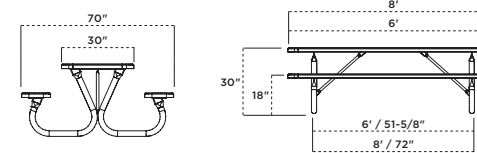
BT238-V6 6' Extra Heavy-Duty Bolt-thru Rectangular Table, green diamond pattern, black frame

BT238 | EXTRA HEAVY-DUTY BOLT-THRU TABLE

- Available in 6' and 8' lengths
- Thermoplastic finish with powder coated frame
- 2-3/8" O.D. all bolt together walk-through frame
- 1" O.D. brace
- All stainless steel hardware
- Portable and/or surface mount
- See page 99 for color options and 98 for patterns

6 FOOT 8 FOOT

|                       |                       |
|-----------------------|-----------------------|
| BT238-V6              | BT238-V8              |
| BT238-VR6             | BT238-VR8             |
| BT238-P6              | BT238-P8              |
| BT238-PR6             | BT238-PR8             |
| BT238-FV (frame only) | BT238-FV (frame only) |
| BT238H                |                       |



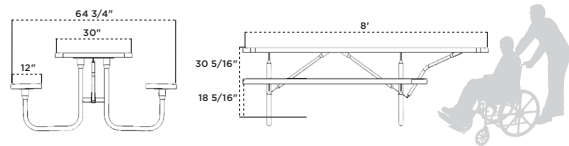
158HS-V8 8' Heavy-Duty Single Sided ADA Accessible Table, red diamond pattern, black frame

158HS | HEAVY-DUTY 8' SINGLE SIDED ADA ACCESSIBLE TABLE 

- Available in an 8' ADA accessible option with single-sided handicap accessibility
- Thermoplastic finish with powder coated frame
- 1-5/8" O.D. bolt together frame
- 1" O.D. brace
- All stainless steel hardware
- Portable and/or surface mount
- See page 99 for color options and 98 for patterns

ADA SINGLE SIDED

|                     |
|---------------------|
| 158HS-V8            |
| 158HS-VR8           |
| 158HS-P8            |
| 158HS-PR8           |
| 158-FV (frame only) |



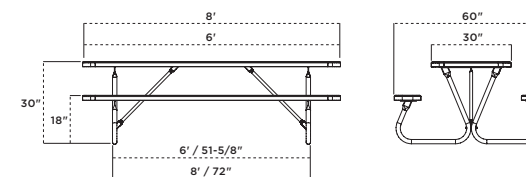
BT158-V6 6' Heavy-Duty Bolt-Thru Rectangular Table, green diamond pattern, black frame

BT158 | HEAVY-DUTY BOLT-THRU TABLE

- Available in 6' and 8' lengths
- Thermoplastic finish with powder coated frame
- 1-5/8" O.D. bolt together frame
- 1" O.D. brace
- All stainless steel hardware
- Portable and/or surface mount
- See page 99 for color options and 98 for patterns

6 FOOT 8 FOOT

|                       |                       |
|-----------------------|-----------------------|
| BT158-V6              | BT158-V8              |
| BT158-VR6             | BT158-VR8             |
| BT158-P6              | BT158-P8              |
| BT158-PR6             | BT158-PR8             |
| BT158-FV (frame only) | BT158-FV (frame only) |

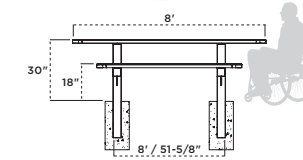




238H-V8 8' Extra Heavy-Duty Bolt-Thru Rectangular Table, green diamond pattern, black frame



347-P6 6' Rectangular Dual Pedestal Table, green perforated pattern, black frame



347 | RECTANGULAR DUAL PEDESTAL

- Available in 6' and 8' lengths with ADA accessibility (8' inground mount only)
- Thermoplastic top and seats with powder coated frame
- 4" x 4" square all MIG welded frame and support arms
- All stainless steel hardware
- Inground (S) or surface mount (SM)
- See page 99 for color options and 98 for patterns

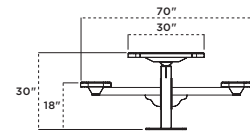
| 6 FOOT  | 8 FOOT  | ADA 8 FOOT |
|---------|---------|------------|
| 347-V6  | 347-V8  | 347H-V8    |
| 347-P6  | 347-P8  | 347H-P8    |
| 347-VR6 | 347-VR8 | 347H-VR8   |
| 347-PR6 | 347-PR8 | 347H-PR8   |

337 | HEAVY-DUTY RECTANGULAR SINGLE PEDESTAL TABLE

- Available in 4' and 6' lengths with ADA accessibility
- Thermoplastic finish with powder coated frame
- 4" x 4" square post frame with 3" x 3" square support arms
- All MIG welded frame
- All stainless steel hardware
- Inground (S) or surface mount (SM)
- See page 99 for color options and 98 for patterns



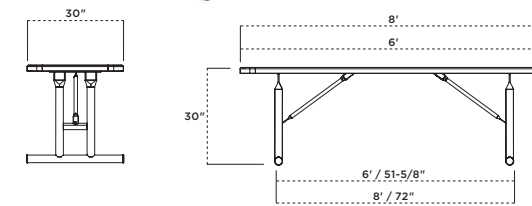
337SM-P6 6' Heavy-Duty Rectangular Single Pedestal Table, surface mount, brown perforated pattern, black frame



| 4 FOOT | 6 FOOT  |
|--------|---------|
| 337-V4 | 337-V6  |
| 337-P4 | 337-P6  |
| —      | 337-VR6 |
| —      | 337-PR6 |



238U-V6 6' Utility Table, portable, red diamond pattern, black frame



238U | UTILITY TABLE

Utility Tables have an easy access design and are ideal for any park or restaurant.

- Available in 6' and 8' lengths with ADA accessibility
- Thermoplastic finish with powder coated frame
- 2-3/8" O.D. all MIG welded frame
- 1" O.D. brace
- All stainless steel hardware
- Portable only
- See page 99 for color options and 98 for patterns

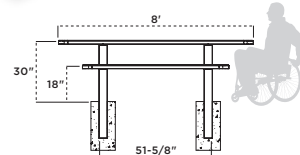
| 6 FOOT   | 8 FOOT   |
|----------|----------|
| 238U-V6  | 238U-V8  |
| 238U-VR6 | 238U-VR8 |
| 238U-P6  | 238U-P8  |
| 238U-PR6 | 238U-PR8 |

349 | MULTI PEDESTAL TABLE

- Available in 6', and 8' lengths with ADA accessibility (8' only)
- Thermoplastic finish with powder coated frame
- 4" square post all MIG welded frame with walk-through design
- All stainless steel hardware
- Inground (S) or surface mount (SM)
- See page 99 for color options and 98 for patterns



349S-V6 6' Multi Pedestal Table, inground, ultra blue diamond pattern, black frame



| 6 FOOT  | 8 FOOT  | ADA 8 FOOT |
|---------|---------|------------|
| 349-V6  | 349-V8  | 349H-V8    |
| 349-P6  | 349-P8  | 349H-P8    |
| 349-VR6 | 349-VR8 | 349H-VR8   |
| 349-PR6 | 349-PR8 | 349H-PR8   |



349SU-V8 8' Utility Table, inground mount, blue diamond pattern, black frame

349U | MULTI PEDESTAL UTILITY TABLE

Utility Tables have an easy access design and are ideal for any park or restaurant.

- Available in 6' and 8' lengths with ADA accessibility
- Thermoplastic finish with powder coated frame
- 4" square post all MIG welded frame with walk-through design
- All stainless steel hardware
- Inground (S) or surface mount (SM)
- See page 99 for color options and 98 for patterns

| 6 FOOT   | 8 FOOT   |
|----------|----------|
| 349U-V6  | 349U-V8  |
| 349U-VR6 | 349U-VR8 |
| 349U-P6  | 349U-P8  |
| 349U-PR6 | 349U-PR8 |



320-P6 6' Canopy Table, inground, ultra blue perforated pattern, black frame



369S-RDV Round Span Leg Table, red diamond pattern, black frame

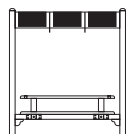


320-P6 6' Canopy Table, inground, ultra blue perforated pattern, black frame

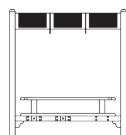
320 | CANOPY TABLE

- 6' lengths available with canopy
- Thermoplastic finish with powder coated frame
- 4" x 4" square all MIG welded frame and support arms
- Canopy offers protection from the sun
- All stainless steel hardware
- Inground mount only
- Pattern options: perforated, diamond
- See page 99 for color options

See pg. 40 for matching bench



320-V6

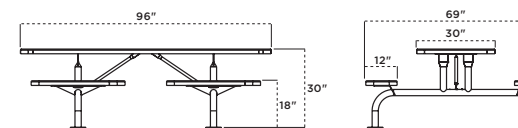


320H-V6

| CANOPY TABLE (320) | ADA CANOPY TABLE (320H) |
|--------------------|-------------------------|
| 320-V6             | 320H-V6                 |
| 320-P6             | 320H-P6                 |



239SM-V8 8' Rectangle Span Leg Table, green diamond pattern, black frame



239 | RECTANGULAR SPAN LEG TABLE

- Span Leg design allows additional legroom and easy clean-up access, ideal for outdoor eating areas
- Available in 8' only
- Thermoplastic finish with powder coated frame
- Frame is made of 2 3/8" O.D. powder coated steel tubing
- All MIG welded frame
- Inground (S) or surface mount (SM)
- Cover plates are available in sets of 2, sold separately
- Pattern options: perforated, perforated rolled, diamond, diamond rolled
- See page 99 for color options

RECTANGLE TABLE

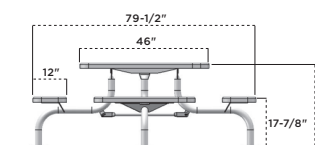
|        |
|--------|
| 239-V8 |
| 239-P8 |

369 | SPAN LEG TABLE

- Span Leg design allows additional legroom and easy clean-up access, ideal for outdoor eating areas
- Frame is made of 2 3/8" O.D. powder coated steel tubing
- Thermoplastic finish with powder coated frame
- All MIG welded frame
- Inground (S) or surface mount (SM)
- ADA accessible option available
- Cover plates are available in sets of 2, sold separately
- Pattern options: perforated, diamond, perforated rolled, diamond rolled
- Available in square, round, or octagon shapes
- See page 99 for color options



369SM-V Square Span Leg Table, black diamond pattern, black frame



| ROUND TABLE | OCTAGON TABLE | SQUARE TABLE | 3-SEAT SQUARE TABLE |
|-------------|---------------|--------------|---------------------|
| 369-RDV     | 369-OV        | 369-V        | 369H-V              |
| 369-RDP     | 369-OP        | 369-P        | 369H-P              |
| 369-RDVR    | 369-OVR       | 369-VR       | 369H-VR             |
| 369-RDPR    | 369-OPR       | 369-PR       | 369H-PR             |



233SM-SD6 6' Outdoor Classroom Desk

233 | OUTDOOR CLASSROOM DESK 

- Two circular seats on a 6' table provides separation between users
- 20"W solid top provides easy writing surface
- Seats can be placed on same or opposite sides
- 3 seat option available (add-on sold separately)
- 2-3/8" O.D. all MIG welded frame
- Inground surface mount
- Thermoplastic finish with powder coated frame
- ADA compliant



338S-RDV 46" Round Single Pedestal Table, inground mount, red diamond pattern, black frame



230-RDPC-46 46" Round Contour Table, brown perforated pattern, brown frame



338SM-RDV 46" Round Single Pedestal Table, surface mount, red diamond pattern, black frame

338 | 46" SINGLE PEDESTAL TABLE

- 46" square, octagon, or round top table with standard 1-9/16" I.D. umbrella hole
- Thermoplastic finish with powder coated frame
- 4" x 4" square post frame with 2-7/8" O.D. round support arms
- All stainless steel hardware
- Inground (S) or surface mount (SM)
- ADA accessible option available add with inground mount only
- See page 99 for color options and 98 for patterns

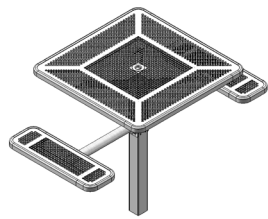
| SQUARE | OCTAGON | ROUND   |
|--------|---------|---------|
| 338-V  | 338-OV  | 338-RDV |
| 338-P  | 338-OP  | 338-RDP |
| 338-VR | 338-OVR |         |
| 338-PR | 338-OPR |         |

ADA SINGLE-SIDED

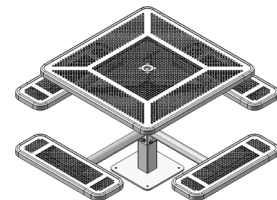
338H3-add (H3)

ADA DOUBLE-SIDED

338H2-add (H2)



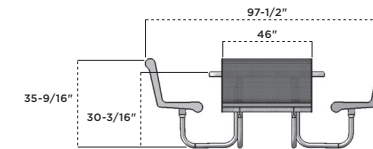
338SH2-P



338SM-P



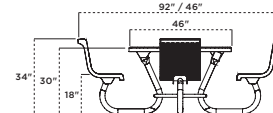
358-VC 46" Square Capri Seating Table, green diamond pattern, green frame



358 | CAPRI SEATING TABLE

- 46" square or octagon table top with a standard 1-9/16" dia. umbrella hole
- Thermoplastic finish with powder coated frame
- 1-5/8" O.D. all MIG welded frame with walk-through design
- All stainless steel hardware
- Portable and/or surface mount
- Seating pattern options: perforated, diamond
- See page 99 for color options

| SQUARE | OCTAGON | SQUARE 3-SEAT |
|--------|---------|---------------|
| 358-VC | 358-OVC | 358H-VC       |
| 358-PC | 358-OPC | 358H-PC       |



230-RDPC-46 46" Round Contour Table, brown perforated pattern, brown frame

230 | ROUND CONTOUR TABLE

- 46" table top with a standard 1-9/16" dia. umbrella hole
- Thermoplastic finish with powder coated frame
- 2-3/8" O.D. all bolt together walk-through frame
- All stainless steel hardware
- Portable and/or surface mount
- See page 99 for color options and 98 for patterns

| 46" TABLE  | 46" 3-SEAT TABLE |
|------------|------------------|
| 230-RDVC46 | 230H-RDVC46      |
| 230-RDPC46 | 230H-RDPC46      |



365-RDP 46" Bistro Table blue perforated pattern, black frame



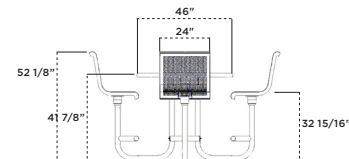
Swivel Seats

365 | BISTRO TABLE

- 46" round table top featuring swivel seats with 180° rotation
- Standard umbrella hole
- Ergonomic foot rest
- 2-3/8" O.D. all MIG welded frame
- Portable and/or surface mount
- Thermoplastic coated with powder coated frame
- Stainless steel and zinc coated hardware fasteners
- Pattern options: perforated, diamond
- See page 99 for color options

BISTRO TABLE

|         |
|---------|
| 365-RDV |
| 365-RDP |



365-RDP 46" Bistro Table black perforated pattern, black frame

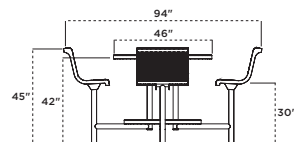


362 | ULTRA BAR HEIGHT TABLE

- 46" table top with a standard 1-9/16" diameter umbrella hole
- Thermoplastic finish with powder coated frame
- 2-3/8" O.D. all MIG welded frame
- Cover plates available
- All stainless steel hardware
- Inground (S) or Surface Mount (SM)
- Pattern options: perforated, diamond
- See page 99 for color options

46" ROUND TABLE

|         |
|---------|
| 362-RDV |
| 362-RDP |



362SM-RDV 46" Ultra Bar Height Table, surface mount, ultra blue diamond pattern, ultra blue frame



956-V Tall Food Court Chairs, green diamond pattern, green frame



953-V Low Food Court Chairs, green diamond pattern, black frame

953/956 | TALL AND STANDARD FOOD COURT CHAIRS

- 30" tall chair with 18" wide contour seat
- Thermoplastic finish with powder coated frame
- 1-5/16" O.D. all MIG welded
- All stainless steel hardware
- Portable only
- Can be used with the 42" tall 360/361 tables
- 18" contour seat
- Thermoplastic finish with powder coated frame
- 1-5/16" O.D. all MIG welded arched support legs and arms
- All stainless steel hardware
- Portable only
- Can be used with the 30" tall 360L/361L tables
- See page 99 for color options and 98 for patterns

| 30" CHAIR | 18" CHAIR |
|-----------|-----------|
| 956-V     | 953-V     |
| 956-P     | 953-P     |
| 956-FB    | 953-FB    |
| 956-W     | 953-W     |
| 956-S     | 953-S     |



360P-RDSD Round Tall Food Court Table, portable, green solid top, black frame

360/360L | PEDESTAL FOOD COURT TABLE

- 36" table top with 42" high frame or optional low (L) 30" frame
- Thermoplastic finish with powder coated frame
- 3-1/2" O.D. all MIG welded – portable (P)
- 3" Square all MIG welded – inground (S) or surface mount (SM)
- All stainless steel hardware
- Portable standard (P) and with round post, or surface mount (SM) and Inground (S) with square post
- Can be used with the 956/953 food court chairs
- Umbrella hole not available
- See page 99 for color options and 98 for patterns

| 42" TALL | SQUARE |  | ROUND    |  | 30" LOW | SQUARE  |  | ROUND     |  |
|----------|--------|--|----------|--|---------|---------|--|-----------|--|
|          | 360-V  |  | 360-RDV  |  |         | 360L-V  |  | 360L-RDV  |  |
|          | 360-P  |  | 360-RDP  |  |         | 360L-P  |  | 360L-RDP  |  |
|          | 360-SD |  | 360-RDSD |  |         | 360L-SD |  | 360L-RDSD |  |



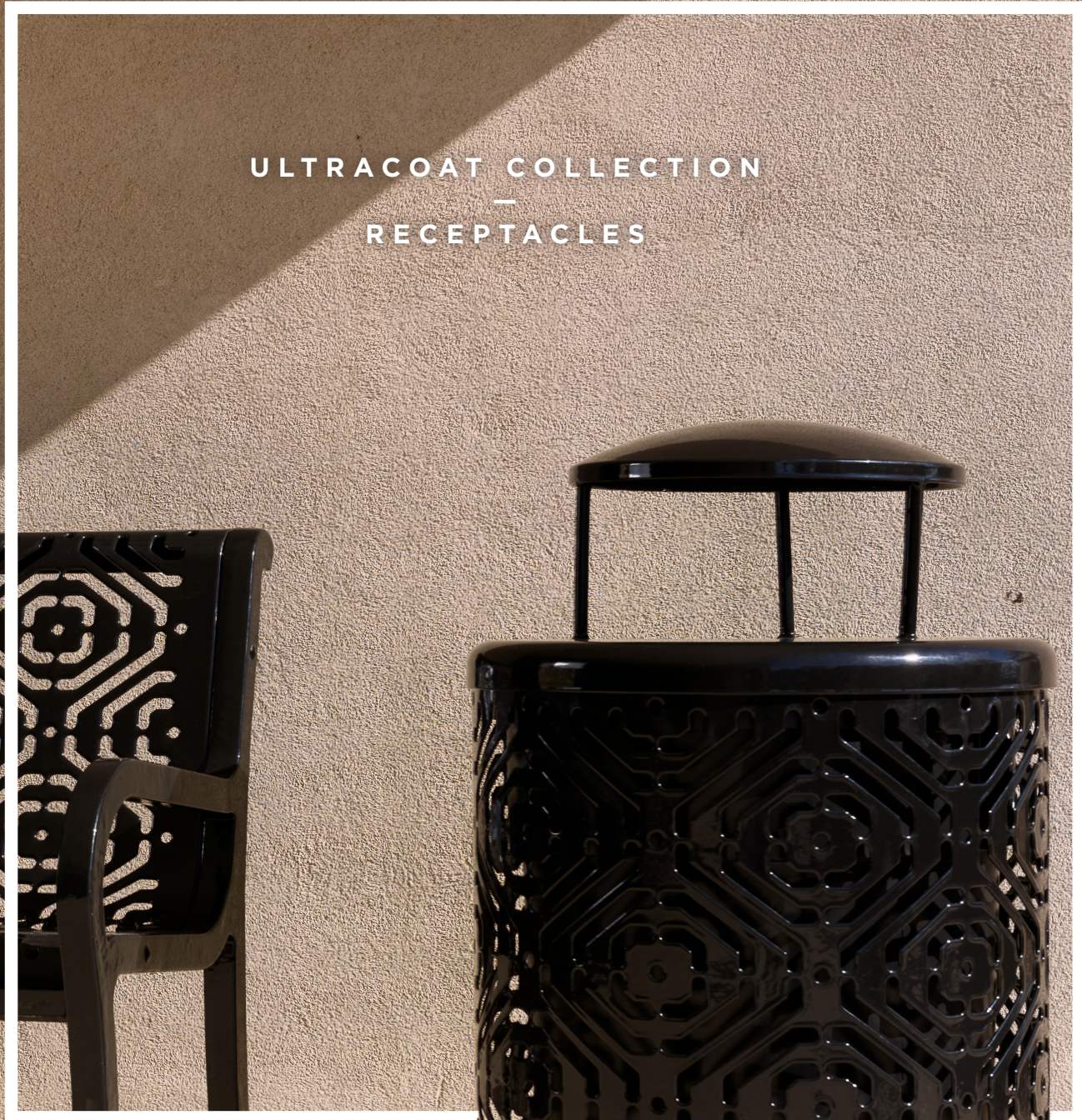
361L-RDV Low Round Food Court Table, portable, green diamond pattern, black frame

361 | FOOD COURT TABLE

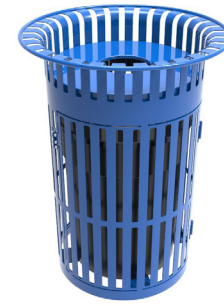
- 36" table top with 42" high frame or optional low (L) 30" frame
- 1-9/16" diameter umbrella hole
- Thermoplastic finish with powder coated frame
- 1-5/8" O.D. all MIG welded (portable)
- All stainless steel hardware
- Portable only
- Can be used with the 956/953 food court chairs
- Pattern options: perforated, diamond
- See page 99 for color options

| 42" TALL | SQUARE  |  | ROUND    |  | 30" LOW | SQUARE                                 |  | ROUND     |  |
|----------|---|--|----------|--|---------|--|--|-----------|--|
|          | 361-V   |  | 361-RDV  |  |         | 361L-V                                 |  | 361L-RDV  |  |
|          | 361-P   |  | 361-RDP  |  |         | 361L-P                                 |  | 361L-RDP  |  |
|          | 361-SD <td colspan="2">361-RDSD</td> <td></td> <td colspan="2">361L-SD <td colspan="2">361L-RDSD</td> </td> |  | 361-RDSD |  |         | 361L-SD <td colspan="2">361L-RDSD</td> |  | 361L-RDSD |  |

ULTRACOAT COLLECTION  
—  
RECEPTACLES



FB-32 Metal Trash Receptacle, black fiesta pattern with RBR-32-08 Rain Bonnet Lid and PL-32 Liner



SD-36FT Swing Door Receptacle, vertical slat, blue with matching flat top lid

SD-36FT | SWING DOOR RECEPTACLE

- 36 gallon capacity
- Thermoplastic finish
- Slat design with flared top
- All MIG welded unit
- Lid and liner included
- Featuring easy access swing door
- Portable and/or surface mount

| FLAT TOP | ASH URN | RAIN BONNET |
|----------|---------|-------------|
| SD-36FT  | SD-36AU | SD-36RB     |



EX-32 Metal Trash Receptacle, blue diamond pattern with FTR-32-08 Flat Top Lid and PL-32 Liner



W-32 Metal Trash Receptacle, green wave pattern with FTR-32-08 Flat Top Lid and PL-32 Liner

32/55 | METAL TRASH RECEPTACLES

- Available in 32 gallon and 55 gallon capacities
- Thermoplastic finish
- All MIG welded unit
- Portable with mounting kit sold separately
- Lids and liners are sold separately
- See page 58 for lids and liners
- See page 99 for color options and 98 for patterns
- Available with Recycle Logo (32RE)

| 32 GALLON | 55 GALLON |
|-----------|-----------|
| EX-32     | EX-55     |
| PR-32     | PR-55     |
| FB-32     | FB-55     |
| W-32      | W-55      |
| S-32      | S-55      |
| HS-32     |           |
| SP-32     |           |
| PR-32RE   |           |
| EX-32RE   |           |



PR-32RE Standard Recycled Logo Receptacle, ultra blue perforated pattern with FTR-32-08 Flat Top Lid and PL-32 Liner

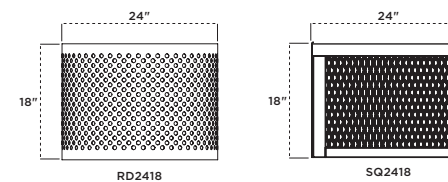


RD2418-P Round Planter, black perforated pattern

RD2418/SQ2418 | PLANTER

- 24" wide x 18" high planters
- Thermoplastic finish
- All MIG welded frame
- Diamond (V) or Perforated (P) design
- Portable and/or surface mount
- 01-05-0212 liner sold separately
- See page 99 for color options

| SQUARE   | ROUND    |
|----------|----------|
| SQ2418-V | RD2418-V |
| SQ2418-P | RD2418-P |



RECEPTACLES

METAL RECEPTACLE LIDS

- Fits our 32 or 55 gallon receptacles
- 8" opening (08) standard
- Optional 14" opening (14) available
- 23-3/4" I.D. opening (32 gallon tops)
- 1/2" diameter rod (AUR & RBR)
- All MIG welded frame (AUR & RBR)



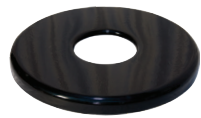
RT-32

RT-32 | ROUND TOP

- 11-3/4"h x 24-7/8"w
- 32 gallon 24" I.D.
- Heavy duty polyethylene w/ swing door
- Only available on thermoplastic receptacles
- Available in black

|        |       |
|--------|-------|
| 32 GAL | RT-32 |
|--------|-------|

FTR | FLAT TOP



FTR-32-08

- 24"w (26-3/4" for 55 gal.)
- Spun metal lid
- Thermoplastic lids required on thermoplastic receptacles
- Powder coated lids required on recycled plastic receptacles
- See page 99 for color options

| SIZE   | 8" OPENING | 14" OPENING |
|--------|------------|-------------|
| 32 GAL | FTR-32-08  | FTR-32-14   |
| 55 GAL | FTR-55-08  | FTR-55-14   |



AUR-32-08

AUR | ASH URN

- 13"h x 24"w (26-3/4" for 55 gal.)
- 20 gauge spun metal bonnet and ash urn
- Thermoplastic lids required on thermoplastic receptacles
- Powder coated lids required on recycled plastic receptacles
- See page 99 for color options

| SIZE   | 8" OPENING | 14" OPENING |
|--------|------------|-------------|
| 32 GAL | AUR-32-08  | AUR-32-14   |
| 55 GAL | AUR-55-08  | AUR-55-14   |

RBR | RAIN BONNET



RBR-32-08

- 13"h x 24"w (26-3/4" for 55 gal.)
- 20 gauge spun metal bonnet
- Thermoplastic lids required on thermoplastic receptacles
- Powder coated lids required on recycled plastic receptacles
- See page 99 for color options

| SIZE   | 8" OPENING | 14" OPENING |
|--------|------------|-------------|
| 32 GAL | RBR-32-08  | RBR-32-14   |
| 55 GAL | RBR-55-08  | RBR-55-14   |



SM KIT Surface Mounting Kit



IG KIT Inground Mounting Kit

RECEPTACLE MOUNTING KITS

All trash receptacles are portable and can be converted into either inground (IG) or surface mount (SM). Kits fit 32, 36, and 55 gallon receptacles. Sold separately

- 2-3/8" O.D. all MIG welded pipe
- Powder coated black finish

| SIZE   | INGROUND | SURFACE |
|--------|----------|---------|
| 32 GAL | IG KIT   | SM KIT  |
| 36 GAL | IG KIT   | SM KIT  |
| 55 GAL | IG KIT   | SM KIT  |



PL | RECEPTACLE LINER

- Liner fits most of our 32, 36, and 55 gallon trash receptacles.
- 32-Gallon measures 21-7/8" wide x 27-1/2" tall
- 55-Gallon measures 23-3/8" wide x 31-3/8" tall
- Heavy-Duty Plastic
- Sold separately unless noted

| 32 GALLON | 55 GALLON |
|-----------|-----------|
| PL-32     | PL-55     |



CABLE | 18" CABLE

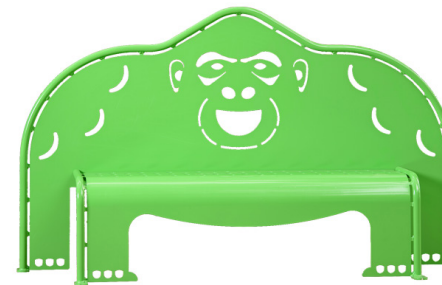
Cable is sold separately. **Specify cable when ordering lid and receptacle**

- Attachment is used to keep the lid and trash receptacle permanently connected
- 3/32" diameter braided cable



EARLY CHILDHOOD  
—  
COLLECTION

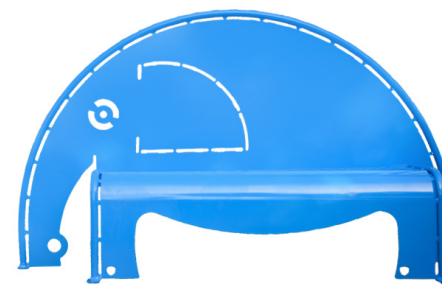
258-P4 4' Elephant Bench, Sky Blue



258 | GORILLA BENCH

- 4' perforated seat, 5' overall length
- Powder coated finish
- Two piece bolt together design
- SM or inground mounting options

258-P4 4' Gorilla Bench, spring green



259 | ELEPHANT BENCH

- 4' perforated seat, 5' overall length
- Powder coated finish
- Two piece bolt together design
- SM or inground mounting options

259-P4 4' Elephant Bench, sky blue



940P-P6-BB 6' Buddy Bench, blue with black frame, original font, friends icon

EARLY CHILDHOOD



940PPS-V3 3' Portable Preschool Bench, red diamond pattern, black frame

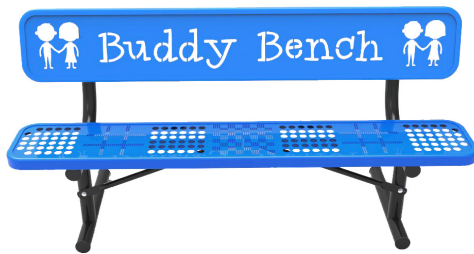
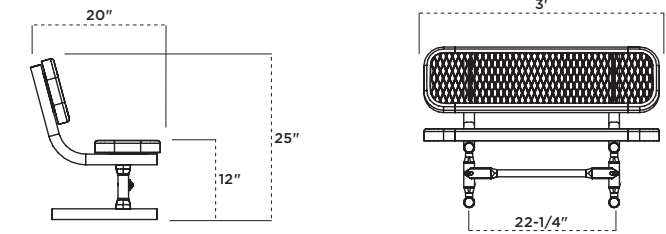
940PPS | 3' PORTABLE PRESCHOOL BENCH

- 3' length with 12" high seating
- Thermoplastic finish and powder coated frame
- 1-5/8" O.D. all MIG welded pipe
- 1" O.D. brace (portable frame only)
- All stainless steel hardware
- Portable (P) or inground (S)
- See page 99 for color options and 98 for seating patterns

PRESCHOOL

940PPS-V3

940PPS-P3



940P-P6-BB 6' Buddy Bench, blue with black frame, original font, friends icon

940 | BUDDY BENCH

- Available in 6' or 8'
- Perforated Game Pattern (featuring tic-tac-toe and chess/checkers perforated seat designs)
- Portable (P), inground (S), or surface mount (SM)
- Thermoplastic finish (seat and back) with powder coated frame
- 1" O.D. Brace (portable frame only)



954-CL 6' Lexington Buddy Bench, red with red frame, octin font with paw print icon

954 | LEXINGTON BUDDY BENCH

- Available in 6' or 8'
- Slat pattern
- Portable and/or surface mount
- 1-1/2" thick cast aluminum frame
- Thermoplastic finish

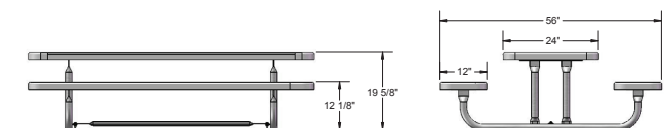
158PS | RECTANGULAR PRESCHOOL TABLE

- Available in 4', 6', and 8' lengths with 20" high top and 12" high seating
- Thermoplastic finish with powder coated frame
- 1-5/8" O.D. all MIG welded pipe with 1" O.D. brace
- Walk through design
- All stainless steel hardware
- Portable
- Pattern options: perforated, diamond
- See page 99 for color options



158PS-V6 6' Rectangular Preschool Table, green diamond pattern, black frame

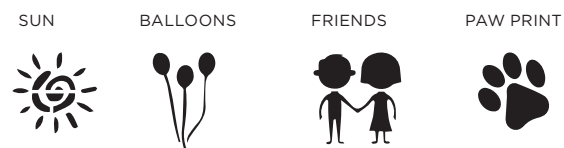
| 4 FOOT   | 6 FOOT   | 8 FOOT   |
|----------|----------|----------|
| 158PS-V4 | 158PS-V6 | 158PS-V8 |
| 158PS-P4 | 158PS-P6 | 158PS-P8 |



BUDDY BENCH LETTERING OPTIONS



BUDDY BENCH ICON OPTIONS







358PS-PLP Learning Table with Perforated Pattern



G357 46" Preschool Table, green planks, galvanized frame



350PS-P Preschool Table with solid table top design and perforated seating

350PS | PORTABLE PRESCHOOL TABLE

- 36" table top with 12" high seating
- 1-5/8" O.D. all MIG welded pipe with 1" O.D. brace
- Walk through design
- All stainless steel hardware

46" TABLE

**SQUARE**  
Solid Top  
350PS-P  
350PS-V



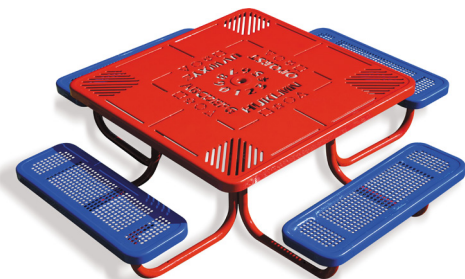
P557-PE4BL 4' Heavy-Duty Preschool Table

557 | HEAVY-DUTY 4' PRESCHOOL TABLE

- 1-5/8" O.D. all MIG welded pipe with 1" O.D. brace
- Walk through design
- All zinc plated hardware
- Available with green or blue high density polyethylene planks with powder coated frame
- Seats are 9" x 48" and table top is 30" x 48"
- Portable

**GREEN PLANK**      **BLUE PLANK**

557-PE4G      557-PE4BL



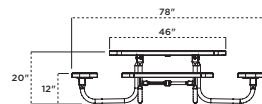
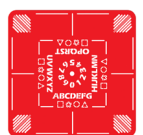
358PS-PLP Learning Table, perforated pattern

358PS | PORTABLE PRESCHOOL TABLE

- 46" table top with 12" high seating
- 1-5/8" O.D. all MIG welded pipe with 1" O.D. brace
- Walk through design
- All stainless steel hardware
- Also available with learning table top that includes alphabet and numbers 0-9 to compliment your early childhood setting

46" TABLE

| SQUARE   | OCTAGON   | ROUND     | LEARNING TABLE |
|----------|-----------|-----------|----------------|
| 358PS-P  | 358PS-OP  | 358PS-RDP | 358PS-PLP      |
| 358PS-V  | 358PS-OV  | 358PS-RDV |                |
| 358PS-VR | 358PS-OVR |           |                |
| 358PS-PR | 358PS-OPR |           |                |



G357 46" Preschool Table, green planks, galvanized frame

357 | 36" PRESCHOOL TABLE

- 1" O.D. all bolt together frame with 1" O.D. brace
- Walk through design
- All zinc plated hardware
- Features high density polyethylene planks with galvanized or powder coated frame
- Seats are 9-1/4" x 36" and table top is 24" x 36"
- Portable

**GREEN PLANKS**      **RED & GREEN PLANKS**

357-G      357-MC  
G357

NATURAL COLLECTION



982-R46 6' Recycled Bench with Back, 4" x 4" gray recycled plastic planks, black frame



952SM-R46 6' Recycled Bench without Back, surface mount, 4" x 4" green recycled plastic planks, black frame



952 | RECYCLED BENCH WITHOUT BACK

- Available in 6' or 8' lengths
- Available with 2" x 4", 3" x 4", or 4" x 4" recycled plastic planks with powder coated or hot-dip galvanized frame
- Also available with 2" x 4" wood planks
- 3" x 3" square all MIG welded frame
- All zinc plated hardware
- Surface mount (SM) or inground mount (S)
- See page 99 for frame color options and 97 for plank color options

|      |                                  |                                  |                                  |      |                                  |                                  |                                  |
|------|----------------------------------|----------------------------------|----------------------------------|------|----------------------------------|----------------------------------|----------------------------------|
| 6 FT | 2" x 4" <input type="checkbox"/> | 3" x 4" <input type="checkbox"/> | 4" x 4" <input type="checkbox"/> | 8 FT | 2" x 4" <input type="checkbox"/> | 3" x 4" <input type="checkbox"/> | 4" x 4" <input type="checkbox"/> |
|      | 952-R6                           | 952-R36                          | 952-R46                          |      | 952-R8                           | 952-R38                          | 952-R48                          |

982SM-R46 6' Recycled Bench with Back, surface mount, 4" x 4" green recycled plastic planks, black frame



982 | RECYCLED BENCH WITH BACK

- Available in 6' or 8' lengths
- Available with 2" x 4", 3" x 4", or 4" x 4" recycled plastic planks with powder coated finish or hot dip galvanized frame
- Also available with 2" x 4" wood planks
- 3" x 3" square all MIG welded frame
- All zinc plated hardware
- Surface mount (SM) or inground mount (S)
- See page 97 for plank color options

|      |                                  |                                  |                                  |      |                                  |                                  |                                  |
|------|----------------------------------|----------------------------------|----------------------------------|------|----------------------------------|----------------------------------|----------------------------------|
| 6 FT | 2" x 4" <input type="checkbox"/> | 3" x 4" <input type="checkbox"/> | 4" x 4" <input type="checkbox"/> | 8 FT | 2" x 4" <input type="checkbox"/> | 3" x 4" <input type="checkbox"/> | 4" x 4" <input type="checkbox"/> |
|      | 982-R6                           | 982-R36                          | 982-R46                          |      | 982-R8                           | 982-R38                          | 982-R48                          |

100% Recycled Plastic Planks

982-R8 8' Recycled Bench with Back, surface mount, 2" x 4" cedar planks, galvanized frame



940-R16 6' Extra Heavy-Duty Bench, portable, 2" x 10" cedar recycled plastic planks, black frame  
TR-32-R Round Receptacle, 2" x 4" cedar recycled planks, with FTR-32-08 Flat Top Lid



238-T8 8' Extra Heavy-Duty Rectangular Table, Redwood stain planks, portable, galvanized frame



940P-R6 6' Extra Heavy Duty Bench, portable, 2"x4" green recycled plastic planks, galvanized frame

940 | EXTRA HEAVY-DUTY BENCH

- Available in 6' or 8' lengths
- Standard 2" x 4" planks with the option of 2" x 10" planks with powder coated or hot-dip galvanized frame
- Available with recycled plastic lumber or wood planks
- All MIG welded frame
- Brace is 1" O.D. pipe
- All Zinc plated hardware
- Portable (P), inground (S), or surface mount (SM)
- See page 99 for frame color options and 97 for plank color options

| 6 FOOT | 2" x 4"      |          | 2" x 10"     |          |
|--------|--------------|----------|--------------|----------|
|        | 940-U6       | 940-U16  | 940-U6       | 940-U16  |
|        | 940-PT6      | 940-PT16 | 940-PT6      | 940-PT16 |
|        | 940-T6       | 940-T16  | 940-T6       | 940-T16  |
|        | 940-R6       | 940-R16  | 940-R6       | 940-R16  |
| 940-F6 | (frame only) | 940-F6   | (frame only) |          |

| 8 FOOT | 2" x 4"      |          | 2" x 10"     |          |
|--------|--------------|----------|--------------|----------|
|        | 940-U8       | 940-U18  | 940-U8       | 940-U18  |
|        | 940-PT8      | 940-PT18 | 940-PT8      | 940-PT18 |
|        | 940-T8       | 940-T18  | 940-T8       | 940-T18  |
|        | 940-R8       | 940-R18  | 940-R8       | 940-R18  |
| 940-F8 | (frame only) | 940-F8   | (frame only) |          |



238-R6 6' Extra Heavy-Duty Rectangular Table, green recycled plastic planks, portable, galvanized frame

238 | EXTRA HEAVY-DUTY RECTANGULAR TABLE

- Available in 6' or 8' lengths with walk-through design
- 2" x 10" planks
- 2-3/8" O.D. all MIG welded frame with 1-5/16" O.D. brace
- Available with recycled plastic lumber or wood planks
- Frame can be powder coated or hot-dip galvanized
- All galvanized hardware (for wood)
- All zinc plated hardware (for recycled plastic)
- Table has pre-drilled holes for a portable and/or surface mount frame
- See page 99 for frame color options and 97 for plank color options

| 6 FOOT  |         | 8 FOOT  |         | 6 FOOT (cont.)     |                    | 8 FOOT (cont.)     |                    |
|---------|---------|---------|---------|--------------------|--------------------|--------------------|--------------------|
| 238-U6  | 238-U8  | 238-U6  | 238-U8  | 238-R6             | 238-R8             | 238-F (frame only) | 238-F (frame only) |
| 238-PT6 | 238-PT8 | 238-PT6 | 238-PT8 | 238-F (frame only) | 238-F (frame only) |                    |                    |
| 238-T6  | 238-T8  | 238-T6  | 238-T8  |                    |                    |                    |                    |



965SM-R6 6' Double-Post Contour Park Bench, surface mount, brown recycled plastic planks, brown frame

965 | DOUBLE-POST CONTOUR PARK BENCH

- Available in 6' or 8' lengths
- Standard 2" x 4" planks with 8-slat contoured seating
- Available with recycled plastic lumber or wood planks
- All MIG welded frame made of 2-3/8" O.D. pipe
- Frame can be powder coated or hot-dip galvanized
- Zinc plated hardware
- Inground (S), surface mount (SM) or Portable (P)
- See page 99 for frame color options and 97 for plank color options

| 6 FOOT  |         | 8 FOOT  |         |
|---------|---------|---------|---------|
| 965-U6  | 965-U8  | 965-U6  | 965-U8  |
| 965-PT6 | 965-PT8 | 965-PT6 | 965-PT8 |
| 965-T6  | 965-T8  | 965-T6  | 965-T8  |
| 965-R6  | 965-R8  | 965-R6  | 965-R8  |



975SM-PT6 6' Single-Post Contour Park Bench, surface mount, pressure treated wood planks, brown frame

975 | SINGLE-POST CONTOUR PARK BENCH

- Available in 6' or 8' lengths
- Standard 2" x 4" planks with 8-slat contoured seating
- Available with recycled plastic lumber or wood planks
- All MIG welded frame made of 2-3/8" O.D. pipe
- Frame can be powder coated or hot-dip galvanized
- Zinc plated hardware
- Inground (S) or surface mount (SM)
- See page 99 for frame color options and 97 for plank color options

| 6 FOOT  |         | 8 FOOT  |         |
|---------|---------|---------|---------|
| 975-U6  | 975-U8  | 975-U6  | 975-U8  |
| 975-PT6 | 975-PT8 | 975-PT6 | 975-PT8 |
| 975-T6  | 975-T8  | 975-T6  | 975-T8  |
| 975-R6  | 975-R8  | 975-R6  | 975-R8  |



238H-T8 6' Extra Heavy-Duty Rectangular Table, redwood stain planks, portable, galvanized frame

238H | EXTRA HEAVY-DUTY ADA ACCESSIBLE TABLE

- Available in an 8' ADA accessible option
- Available with recycled plastic lumber or wood planks
- Frame can be powder coated or hot-dip galvanized
- All zinc plated hardware (for recycled plastic)
- All galvanized hardware (for wood)
- See page 99 for frame color options and 97 for plank color options

| ADA Double-Sided |          |
|------------------|----------|
| 238H-U8          | 238H-U8  |
| 238H-PT8         | 238H-PT8 |
| 238H-T8          | 238H-T8  |
| 238H-R8          | 238H-R8  |



**BT238-BRN6** 6' Bolt-Thru Extra Heavy-Duty Rectangular Table, portable, brown recycled planks, galvanized frame

**BT238 | EXTRA HEAVY-DUTY BOLT-THRU TABLE**

- 6' and 8' lengths
- 2" x 10" planks
- 2-3/8" O.D. bolt-thru frame
- 1-5/16" O.D. brace
- Frame can be powder coated or hot-dip galvanized
- All galvanized hardware (for wood)
- All zinc plated hardware (for recycled plastic)
- Portable and/or surface mount
- See page 99 for frame color options and 97 for plank color options

| 6 FOOT               | 8 FOOT               |
|----------------------|----------------------|
| BT238-U6             | BT238-U8             |
| BT238-PT6            | BT238-PT8            |
| BT238-T6             | BT238-T8             |
| BT238-R6             | BT238-R8             |
| BT238-F (frame only) | BT238-F (frame only) |



**158-GRY6** 6' Heavy-Duty Rectangular Table, portable, grey recycled plastic planks, black frame

**158 | HEAVY-DUTY RECTANGULAR TABLE**

- Available in 6' or 8' lengths with walk-through design
- 2" x 10" planks
- 1-5/8" O.D. all MIG welded frame with 1-5/16" O.D. brace
- Frame can be powder coated or hot-dip galvanized
- All galvanized hardware (for wood)
- All zinc plated hardware (for recycled plastic)
- Portable and/or surface mount
- See page 99 for frame color options and 97 for plank color options

| 6 FOOT             | 8 FOOT             |
|--------------------|--------------------|
| 158-U6             | 158-U8             |
| 158-PT6            | 158-PT8            |
| 158-T6             | 158-T8             |
| 158-R6             | 158-R8             |
| 158-F (frame only) | 158-F (frame only) |




**238H-4-PT10** 10' ADA Shelter Table, pressure treated planks, portable, brown frame

**238H | EXTRA HEAVY-DUTY SHELTER TABLE** 

- Available in 10' and 12' lengths with walk-through design
- Available as 3 (12') or 4 (10') frames
- 2" x 10" planks
- 2-3/8" O.D. all MIG welded frame with 1-5/16" brace
- Frame can be powder coated or hot-dip galvanized
- All galvanized hardware (for wood)
- All zinc plated hardware (for recycled plastic)
- Portable and/or surface mount
- See page 99 for frame color options and 97 for plank color options

| 10' ADA 4-Frame | 12' ADA 3-Frame |
|-----------------|-----------------|
| 238H-4-U10      | 238H-3-U12      |
| 238H-4-PT10     | 238H-3-PT12     |
| 238H-4-T10      | 238H-3-T12      |

**158H | HEAVY-DUTY 8' ACCESSIBLE TABLE** 

- Available in an 8' ADA accessible option with choice of single or double-sided accessibility
- Frame can be powder coated or hot-dip galvanized
- See page 99 for frame color options and 97 for plank color options



**158H-PT8** 8' Double-Sided ADA Accessible Table, portable, pressure treated planks, galvanized frame

**ADA Double-Sided**

|                     |
|---------------------|
| 158H-U8             |
| 158H-PT8            |
| 158H-T8             |
| 158H-R8             |
| 158H-F (frame only) |



**238-3-T10** 10' Shelter Table, redwood stain planks, portable, galvanized frame

**238-3 | EXTRA HEAVY-DUTY SHELTER TABLE**

- Available in 10' and 12' lengths with walk-through design
- 2" x 10" planks
- 2-3/8" O.D. all MIG welded frame
- 1-5/16" O.D. brace
- Frame can be powder coated or hot-dip galvanized
- All galvanized hardware (for wood)
- Portable and/or surface mount
- See page 99 for frame color options and 97 for plank color options

| 10 FOOT    | 12 FOOT    |
|------------|------------|
| 238-3-U10  | 238-3-U12  |
| 238-3-PT10 | 238-3-PT12 |
| 238-3-T10  | 238-3-T12  |

**BT158 | HEAVY-DUTY BOLT-THRU TABLE**

- Available in 6' and 8' lengths
- 2" x 10" planks
- 1-5/8" O.D. all bolt together walk-through design
- 1-5/16" O.D. brace
- Frame can be powder coated or hot-dip galvanized
- All galvanized hardware (for wood)
- All zinc plated hardware (for recycled plastic)
- Portable and/or surface mount
- See page 99 for frame color options and 97 for plank color options



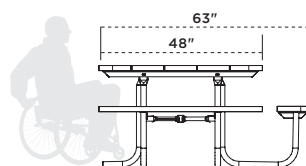
**BT158-GRN6** 6' Bolt-Thru Heavy-Duty Table, green recycled plastic planks, galvanized frame

| 6 FOOT             | 8 FOOT               |
|--------------------|----------------------|
| BT158-U6           | BT158-U8             |
| BT158-PT6          | BT158-PT8            |
| BT158-T6           | BT158-T8             |
| BT158-R6           | BT158-R8             |
| 158-F (frame only) | BT158-F (frame only) |

TABLES



**358H-CDR48** 3-Seat 48" ADA Square Table, cedar recycled plastic planks, black frame



**358H | ADA 48" SQUARE TABLE**

- 48" table with umbrella hole diameter 1-9/16" I.D.
- ADA accessible with 3-seat
- 1-5/8" O.D. all bolt together walk-through design
- 1" O.D. brace
- Frame can be powder coated or hot-dip galvanized
- All galvanized hardware (for wood)
- All zinc plated hardware (for recycled plastic)
- Portable and/or surface mount
- See page 99 for frame color options and 97 for plank color options

**ADA 3-SEAT TABLE**

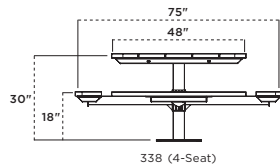
- 358H-U48
- 358H-PT48
- 358H-T48
- 358H-R48
- 358-F (frame only)



**358-R48** 4 Seat 48" square table, green recycled plastic slats, spartan bronze frame



**338SM-PT48** 4-Seat Single Pedestal Table, pressure treated planks, black frame



**338 | 48" SINGLE PEDESTAL TABLE**

- 48" table with umbrella hole diameter 1-9/16" I.D.
- ADA accessible with 2-seat or 3-seat inground option
- 4" x 4" all MIG welded frame with 2-7/8" O.D. round support arms
- Powder coated frame
- All zinc plated hardware
- Inground (S) or surface mount (SM)
- See page 99 for frame color options and 97 for plank color options

**4-SEAT**

- 338-U48
- 338-PT48
- 338-T48
- 338-R48

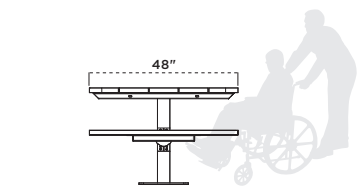


**348S-BRN6** 6' Multi-Pedestal Table, brown recycled plastic planks, black frame

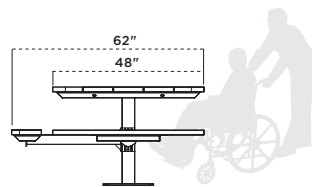
**348 | MULTI-PEDESTAL TABLE**

- Available in 6', and 8' lengths
- 3" x 4" recycled plastic planks
- 4" square post all MIG welded frame with walk-through design
- Powder coated frame
- All zinc plated hardware
- Inground (S) or surface mount (SM)
- See page 99 for frame color options and 97 for plank color options

- | 6 FOOT | 8 FOOT | ADA 8 FOOT |
|--------|--------|------------|
| 348-R6 | 348-R8 | 348H-R8    |



338H2 (Double-Sided Accessibility)



338H3 (Single-Sided Accessibility)

**338H | 48" ADA SINGLE PEDESTAL TABLE**

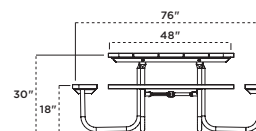
- ADA accessible with 2-seat or 3-seat inground option

**ADA 3-SEAT**

- |            |            |
|------------|------------|
| 338H3-U48  | 338H2-U48  |
| 338H3-PT48 | 338H2-PT48 |
| 338H3-T48  | 338H2-T48  |
| 338H3-R48  | 338H2-R48  |



**358-PT48** 4-Seat 48" Square Table, pressure treated planks, galvanized frame



**358 | 48" SQUARE TABLE**

- 48" table with umbrella hole diameter 1-9/16" I.D.
- 1-5/8" O.D. all bolt together walk-through design
- 1" O.D. brace
- Available with recycled plastic lumber or wood planks
- Frame can be powder coated or hot-dip galvanized
- All galvanized hardware (for wood)
- All zinc plated hardware (for recycled plastic)
- Portable and/or surface mount
- See page 99 for frame color options and 97 for plank color options

- 358-U48
- 358-PT48
- 358-T48
- 358-R48



TR-32-R Round Receptacle, cedar recycled planks, with RBR-32-08 Rain Bonnet Lid  
348S-R6 6' Multipedestal Table, cedar recycled plastic planks, black frame



TR-32-R Round Receptacle, cedar recycled planks, FTR-32-08 Flat Top Lid

TR-32 | ROUND RECEPTACLE

- 32 gallon capacity
- 34" high with a 26-11/16" diameter
- 2" x 4" planks in wood or recycled plastic
- All zinc plated hardware
- Portable with mounting kit sold separately
- Lid and liner sold separately
- See page 97 for plank color options

|          |         |
|----------|---------|
| TR-32-U  | TR-32-R |
| TR-32-PT |         |
| TR-32-T  |         |



TRSQ-32-R Square Receptacle, brown recycled planks, FTR-32-TRSQ Flat Top Lid

TRSQ-32 | SQUARE RECEPTACLE

- 32 gallon capacity
- 34" high and 27" wide
- 2" x 4" planks in wood or recycled plastic
- All zinc plated hardware
- Portable with mounting kit sold separately
- Lid and liner sold separately
- See page 97 for plank color options

|            |           |
|------------|-----------|
| TRSQ-32-U  | TRSQ-32-R |
| TRSQ-32-PT |           |
| TRSQ-32-T  |           |



TRSQ-40-R Double Recycling Receptacle, green recycled plastic planks

TRSQ-20/40/60 | RECYCLING RECEPTACLE

- Available as a single, double or triple recycling receptacle
- 2" x 4" planks in recycled plastic planks
- All zinc plated hardware
- Lid and liner sold separately
- Portable with mounting kit sold separately
- Choose between: Trash, Cans, Plastic, Paper, or Glass
- See page 97 for plank color options

| SINGLE RECYCLING RECEPTACLE | DOUBLE RECYCLING RECEPTACLE | TRIPLE RECYCLING RECEPTACLE |
|-----------------------------|-----------------------------|-----------------------------|
| TRSQ-20-R                   | TRSQ-40-R                   | TRSQ-60-R                   |



RD2418-R Round Planter, brown recycled plastic planks



SQ2418-R Square Planter, green recycled plastic planks

RD2418/SQ2418 | PLANTER

- 18" high and 26-3/4" wide
- 2" x 4" planks in wood or recycled plastic
- All zinc plated hardware
- Portable with mounting kit sold separately
- See page 97 for plank color options
- 01-05-0212 Liner sold separately

| ROUND PLANTER | SQUARE PLANTER |
|---------------|----------------|
| RD2418-U      | SQ2418-U       |
| RD2418-PT     | SQ2418-PT      |
| RD2418-T      | SQ2418-T       |
| RD2418-R      | SQ2418-R       |



SM KIT Surface Mounting Kit



IG KIT Inground Mounting Kit

RECEPTACLE MOUNTING KITS

All trash receptacles are portable and can be converted into either inground (IG) or surface mount (SM). Kits fit 32, 36, and 55 gallon receptacles. Sold separately

- 2-3/8" O.D. all MIG welded pipe
- Powder coated black finish

| SIZE   | INGROUND | SURFACE |
|--------|----------|---------|
| 32 GAL | IG KIT   | SM KIT  |
| 36 GAL | IG KIT   | SM KIT  |
| 55 GAL | IG KIT   | SM KIT  |



FT-32-TRSQ Flat Top Lid



RB-32-TRSQ Rain Bonnet Lid



AU-32-TRSQ Ash Urn Lid

SQUARE RECEPTACLE LIDS

- Fits our 32 gallon square receptacles
- 14 gauge
- All MIG welded frame (AUR & RBR)
- See page 42 for round receptacle lids
- Thermoplastic coated
- See page 99 for color options



PL | RECEPTACLE LINER

- Liner fits most of our 32, 36, and 55 gallon trash receptacles.
- 32-Gallon measures 21-7/8" wide x 27-1/2" tall
- 55-Gallon measures 23-3/8" wide x 31-3/8" tall
- Heavy-Duty Plastic
- Sold separately unless noted

| 32 GALLON | 55 GALLON |
|-----------|-----------|
| PL-32     | PL-55     |



CABLE | 18" CABLE

Cable is sold separately. **Specify cable when ordering lid and receptacle**

- Attachment is used to keep the lid and trash receptacle permanently connected
- 3/32" diameter braided cable

100% RECYCLED



Customization available!

**20-CDR6** 6' Recycled Bench with Back, portable, green recycled plastic planks, black frame

20/21 | RECYCLED BENCH WITH BACK

- Available in 6' or 8' lengths
- Series 20 has six 2" x 4" recycled plastic planks
- Series 21 has four 2" x 6" recycled plastic planks
- Customization available (add -RL)
- Recycled plastic frame
- All zinc plated hardware
- Portable only
- Available in 4 plank colors: Cedar, Green, Gray, and Brown

| 20 SERIES | 6 FOOT  |         | 8 FOOT  |         | 21 SERIES | 6 FOOT  |         | 8 FOOT  |         |
|-----------|---------|---------|---------|---------|-----------|---------|---------|---------|---------|
|           | Model   | Model   | Model   | Model   |           | Model   | Model   | Model   | Model   |
|           | 20-GRY6 | 20-GRN6 | 20-GRY8 | 20-BRN8 |           | 21-GRY6 | 21-GRN6 | 21-GRY8 | 21-BRN8 |
|           | 20-CDR6 | 20-GRN6 | 20-CDR8 | 20-BRN8 |           | 21-CDR6 | 21-GRN6 | 21-CDR8 | 21-BRN8 |



**22-GRY6** 6' Recycled Bench without Back, portable, grey recycled plastic planks, black frame

22 | RECYCLED BENCH WITHOUT BACK

- Available in 6' or 8' lengths
- Three 2" x 4" recycled plastic planks
- Recycled plastic frame
- All zinc plated hardware
- Portable only
- Available in 4 plank colors: Cedar, Green, Gray, and Brown

| 6 FOOT  | 8 FOOT  |
|---------|---------|
| 22-GRY6 | 22-GRY8 |
| 22-CDR6 | 22-CDR8 |
| 22-GRN6 | 22-GRN8 |
| 22-BRN6 | 22-BRN8 |



**26-HEX-GRN** 6' Hexagon Table, green recycled plastic planks, black frame

26 | RECYCLED PICNIC TABLES

- 41-1/2" hexagon table
- Recycled plastic planks and frame
- All zinc plated hardware
- Portable and/or surface mount
- Available in 4 plank colors: Cedar, Green, Gray, and Brown

| Hexagon    | Hexagon w/ 3-Seats |
|------------|--------------------|
| 26-HEX-CDR | 26H-HEX-CDR        |
| 26-HEX-GRN | 26H-HEX-GRN        |
| 26-HEX-GRY | 26H-HEX-GRY        |
| 26-HEX-BRN | 26H-HEX-BRN        |



**24-CDR6** 6' Rectangular Table, cedar recycled plastic planks, black frame

24 | RECYCLED PICNIC TABLES

- Available in 6' or 8' lengths
- Recycled plastic planks and frame
- All zinc plated hardware
- Portable and/or surface mount
- Available in 4 plank colors: Cedar, Green, Gray, and Brown

| 6 FOOT  | 8 FOOT  | 8 FT Table/4 FT Bench |
|---------|---------|-----------------------|
| 24-CDR6 | 24-CDR8 | 24H-CDR8              |
| 24-GRN6 | 24-GRN8 | 24H-GRN8              |
| 24-GRY6 | 24-GRY8 | 24H-GRY8              |
| 24-BRN6 | 24-BRN8 | 24H-BRN8              |

ALUMINUM



**682-T** Double-Sided Galvanized Trash Receptacle

682 | GALVANIZED TRASH RECEPTACLE

The galvanized trash receptacles and lids can be ordered separately or with inground post and holder(s).

- 3-1/2" O.D. Post
- 1/2" Steel Bar
- 4" O.D. Adjustable Collar
- Portable (P) or inground (S)

|              | 30 GAL CAN | 30 GAL LID | HOLDER | CAN, HOLDER, CHAIN |
|--------------|------------|------------|--------|--------------------|
| Single-Sided | G31        | L31        | 681    | 681-T              |
| Double-Sided | —          | —          | 682    | 682-T              |



**940-A6** 6' Aluminum Bench, portable, galvanized frame

940 | ALUMINUM BENCH

- Available in 6', 8', 15', and 21' lengths
- Standard 2" x 10" Aluminum Planks
- Frame can be powder coated or hot-dip galvanized
- Portable (P), inground (S), or surface mount (SM)

| 6 FOOT | 8 FOOT | 15 FOOT  | 21 FOOT  |
|--------|--------|----------|----------|
| 940-A6 | 940-A8 | TB-TPG15 | TB-TPG21 |
|        |        | TB-TIG15 | TB-TIG21 |
|        |        | TB-TSG15 | TB-TSG21 |



**942-A15** 15' Aluminum Team Bench, portable, galvanized frame

942 | PARK & TEAM BENCHES WITHOUT BACK

- Available in 6', 8', 15' or 21' lengths
- 2" x 10" aluminum, wood, or recycled plastic style planks
- All MIG welded frame with zinc plated hardware
- Frame can be powder coated or hot-dip galvanized
- Brace is 1" O.D. pipe
- Portable (P), inground (S), or surface mount (SM)

| 6 FOOT | 8 FOOT | 15 FOOT  | 21 FOOT  |
|--------|--------|----------|----------|
| 942-A6 | 942-A8 | TB-SPG15 | TB-SPG21 |
|        |        | TB-SIG15 | TB-SIG21 |
|        |        | TB-SSG15 | TB-SSG21 |



**238-A8** 8' Extra Heavy-Duty Rectangular Table, aluminum, galvanized frame

238/238H, 158/158H | EXTRA HEAVY-DUTY RECTANGULAR TABLE

- Available in 6', 8', 10' or 12' lengths with walk-through design
- 2" x 10" planks
- 2-3/8" O.D. all MIG welded frame with 1-5/16" O.D. brace (238/238H)
- 1-5/8" O.D. all MIG welded frame with 1-5/16" O.D. brace (158/158H)
- Frame can be powder coated or hot-dip galvanized
- All zinc plated hardware
- Table has pre-drilled holes for a portable and/or surface mount frame

| 6 FOOT | Bolt-Thru 6 FOOT | 8 FOOT | Bolt-Thru 8 FOOT |
|--------|------------------|--------|------------------|
| 238-A6 | BT238-A6         | 238-A8 | BT238-A8         |
| 158-A6 | BT158-A6         | 158-A8 | BT158-A8         |

| ADA 8 FOOT (double-sided) | ADA 8 FOOT (single-sided) | 10 FOOT         | 12 FOOT         |
|---------------------------|---------------------------|-----------------|-----------------|
| 238H-A8                   | 238HS-A8                  | PT-HG10         | PT-HG12         |
| 158H-A8                   | 158HS-A8                  | PT-HG10HC (ADA) | PT-HG12HC (ADA) |

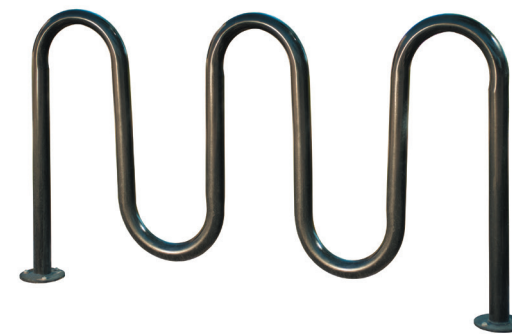


5805SM Contemporary 5 Loop Bike Rack, surface mount

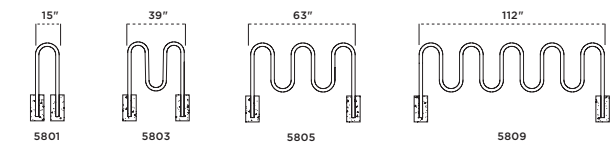
5800 | CONTEMPORARY LOOP BIKE RACK

- 1, 3, 5, 9, 11, and 13 loop options
- 2-3/8" O.D. steel tubing
- Available as hot-dip galvanized or optional powder coated finish
- Inground (S) or surface mount (SM)
- See page 99 for color options

| 1 LOOP<br>1'3"<br>2 bikes | 3 LOOP<br>2'3"<br>5 bikes | 5 LOOP<br>5'3"<br>7 bikes | 9 LOOP<br>9'3"<br>11 bikes | 11 LOOPS<br>11'3"<br>13 bikes |
|---------------------------|---------------------------|---------------------------|----------------------------|-------------------------------|
| 5801                      | 5803                      | 5805                      | 5809                       | 5811                          |



5805SM Contemporary 5 Loop Bike Rack, surface mount



5801/5801D | INVERTED SERIES

- 1, 2, 3, 4, and 5 loop options on c-channel rails
- 14.5" wide standard / 30" wide deluxe (D)
- Round tubing
- Powder coated finish
- Surface mount only
- See page 99 for color options

| 2 LOOP<br>3'<br>4 bikes | 3 LOOP<br>5.5'<br>6 bikes | 4 LOOP<br>8'<br>8 bikes | 5 LOOP<br>10.5'<br>10 bikes |
|-------------------------|---------------------------|-------------------------|-----------------------------|
| 5801-2                  | 5801-3                    | 5801-4                  | 5801-5                      |
| 5801D-2                 | 5801D-3                   | 5801D-4                 | 5801D-5                     |



5801SM 1 Loop Standard Inverted Rack, green





5821D Deluxe Inverted Rack

5821/5821D | INVERTED SERIES

- 1, 2, 3, 4, and 5 loop options on c-channel rails
- 18" wide standard / 30" wide deluxe (D)
- Square tubing
- Powder coated finish
- Surface mount only
- See page 99 for color options

| 2 LOOP<br>3'<br>4 bikes | 3 LOOP<br>5.5'<br>6 bikes | 4 LOOP<br>8'<br>8 bikes | 5 LOOP<br>10.5'<br>10 bikes |
|-------------------------|---------------------------|-------------------------|-----------------------------|
| 5821-2                  | 5821-3                    | 5821-4                  | 5821-5                      |
| 5821D-2                 | 5821D-3                   | 5821D-4                 | 5821D-5                     |

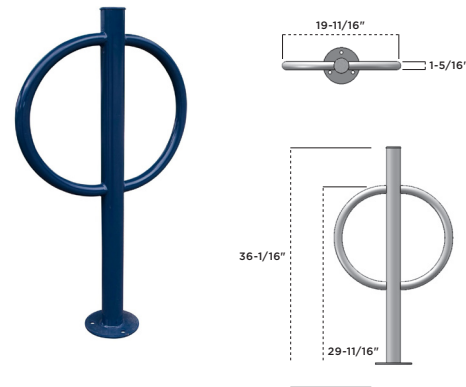


5705S 5' Traditional Bike Rack, ultra silver metallic

5700/5900 | TRADITIONAL BIKE RACK

- 5', 8' and 10' length options
- Portable (P), inground (S), or surface mount (SM)
- Add-on options available
- Available in single sided (5700 series) or double sided (5900 series)
- 1-5/8" O.D. posts with 5/8" O.D. rung bars
- Heavy duty casted clamps
- All zinc plated hardware

| SINGLE SIDED<br>(5700) | 5' (ADD-ON)  | 5 BIKES  | 5705AO | DOUBLE SIDED<br>(5900) | 5' (ADD-ON)  | 10 BIKES | 5905AO |
|------------------------|--------------|----------|--------|------------------------|--------------|----------|--------|
|                        | 8'           | 8 BIKES  | 5708   |                        | 8' (ADD-ON)  | 16 BIKES | 5908   |
|                        | 8' (ADD-ON)  | 8 BIKES  | 5708AO |                        | 8' (ADD-ON)  | 16 BIKES | 5908AO |
|                        | 10'          | 10 BIKES | 5710   |                        | 10'          | 20 BIKES | 5910   |
|                        | 10' (ADD-ON) | 10 BIKES | 5710AO |                        | 10' (ADD-ON) | 20 BIKES | 5910AO |



5040SM Hitch Rack, ultra blue

5040 | HITCH RACK

- Capacity up to 2 bikes
- 36" high x 20" wide
- 2-3/8" O.D. 12 gauge steel tubing
- Rings are 1-5/16" x 14 gauge zinc tubing
- Powder coated finish
- Inground (S) or surface mount (SM)
- See page 99 for color options

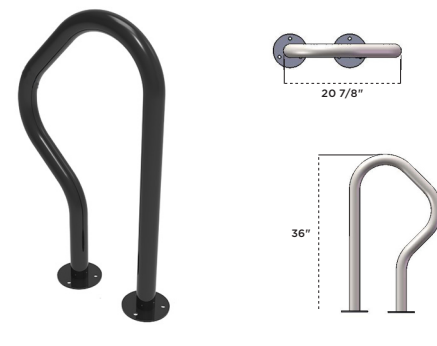
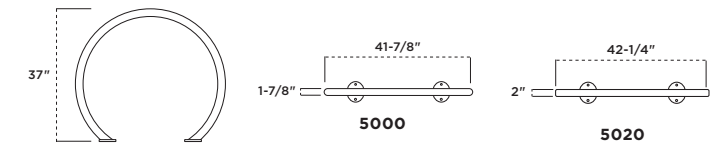


5020SM Horizons Bike Rack, galvanized

5000 | SOLSTICE RACK

5020 | HORIZONS RACK

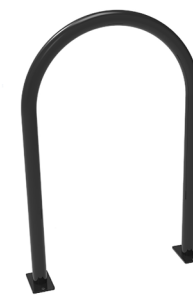
- Capacity up to 2 bikes
- 1.9" O.D. round (5000) or 2" square (5020) framework x 11 gauge steel tubing
- Powder coated finish
- Inground (S) or surface mount (SM)
- See page 99 for color options



5060SM Flash Bike Rack, black

5060 | FLASH BIKE RACK

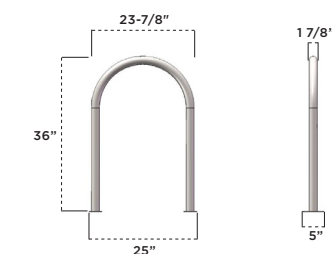
- Capacity up to 2 bikes
- 38-7/16" high x 26-1/4" wide
- Framework is 2-3/8" O.D. pipe
- Powder coated finish
- Inground (S) or surface mount (SM)
- See page 99 for color options



5050SM U Bike Rack, black

5050 | U BIKE RACK

- Capacity up to 2 bikes
- Powder coated finish
- Inground (S) or surface mount (SM)
- See page 99 for color options





2003/2004 | CHARLESTON BOLLARD

- 4" width
- Available in 3' and 4' heights
- Powder coated finish
- 1 and 2 Loop options available for use with chain
- Surface mount (SM) or inground (S)
- See page 99 for color options

|          | 3 FOOT | 4 FOOT |
|----------|--------|--------|
| 4" width | 2003   | 2004   |



2624 | NEW HAVEN BOLLARD

- Available in 6" or 8" diameters
- Available in 3' and 4' heights
- Powder coated finish
- Surface (SM) or inground (S)
- See page 99 for color options

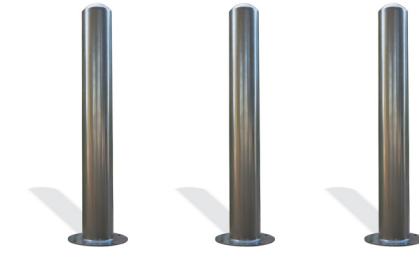
|             | 3 FOOT | 4 FOOT |
|-------------|--------|--------|
| 6" diameter | 2623   | 2624   |
| 8" diameter | 2823   | 2824   |



2633/2833 | DURHAM BOLLARD

- Available in 6" or 8" diameters
- Available in 3' and 4' heights
- Powder coated finish
- Surface mount (SM) or inground (S)
- See page 99 for color options

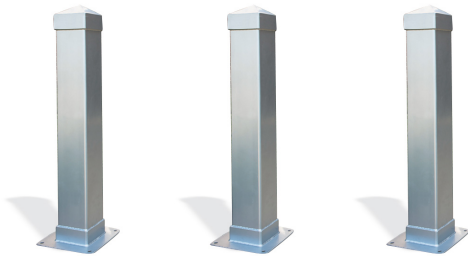
|             | 3 FOOT | 4 FOOT |
|-------------|--------|--------|
| 6" diameter | 2633   | 2634   |
| 8" diameter | 2833   | 2834   |



2603/2604 | RICHMOND BOLLARD

- 6" diameter
- Available in 3' and 4' heights
- 1 and 2 Loop options available for use with chain
- Powder coated finish
- Surface mount (SM) and inground (S)
- See page 99 for color options

|             | 3 FOOT | 4 FOOT |
|-------------|--------|--------|
| 6" diameter | 2603   | 2604   |



2023/2024 | HUNTINGTON BOLLARD

- 6" width
- Available in 3' and 4' heights
- Powder coated finish
- Surface mount (SM) or inground (S)
- See page 99 for color options

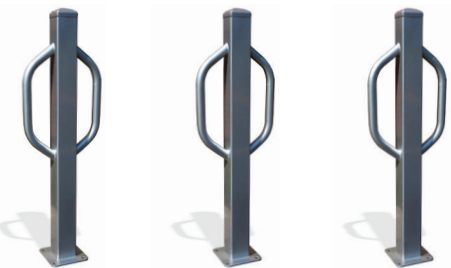
|          | 3 FOOT | 4 FOOT |
|----------|--------|--------|
| 6" width | 2023   | 2024   |



2643/2843 | AUGUSTA BOLLARD

- Available in 6" or 8" diameters
- Available in 3' and 4' heights
- Powder coated finish
- Surface mount (SM) or inground (S)
- See page 99 for color options

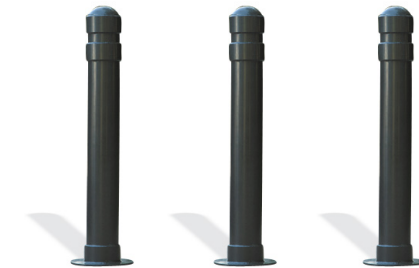
|             | 3 FOOT | 4 FOOT |
|-------------|--------|--------|
| 6" diameter | 2643   | 2644   |
| 8" diameter | 2843   | 2844   |



2013/2014 | MADISON BOLLARD

- 4" width
- Available in 3' and 4' heights
- 1 and 2 Loop options available for use with chain
- Powder coated finish
- Surface mount (SM) or inground (S)
- See page 99 for color options

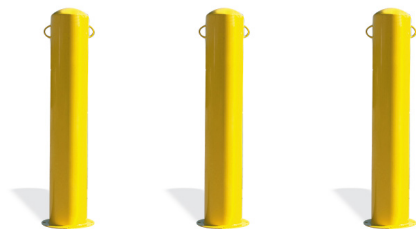
|          | 3 FOOT | 4 FOOT |
|----------|--------|--------|
| 4" width | 2013   | 2014   |



2613/2813 | LEXINGTON BOLLARD

- 6" and 8" diameters
- Available in 3' and 4' heights
- 1 and 2 Loop options available for use with chain
- Powder coated finish
- Surface mount (SM) or inground (S)
- See page 99 for color options

|             | 3 FOOT | 4 FOOT |
|-------------|--------|--------|
| 6" diameter | 2613   | 2614   |
| 8" diameter | 2813   | 2814   |



2803/2804 | SAFETY BOLLARD

- 8" diameter
- Available in 3' and 4' heights
- 1 and 2 Loop options available for use with chain
- Powder coated finish
- Surface mount (SM) or inground (S)
- See page 99 for color options

|             | 3 FOOT | 4 FOOT |
|-------------|--------|--------|
| 8" diameter | 2803   | 2804   |



2900/2901 | COLLAPSIBLE BOLLARD

- 6" width
- Available in 30" and 48" heights
- Designed to prevent unwanted traffic
- Safety yellow only
- Base clearance when collapsed is 3-1/2"
- Must be installed with J bolts and/or anchor bolts (sold separately)
- Stainless steel hardware

|          | 30" Height | 48" Height |
|----------|------------|------------|
| 6" width | 2900       | 2901       |



612 Multifunctional Fire Ring

600 | FIRE RING

- 32" diameter
- Durable rust-resistant, high-temp, black powder coated firebox
- Cooking grate is permanently attached with a cool-coil handle
- Grate flips back for easy clean-up and fire building
- All MIG welded 7 gauge outer wall with 1" safety lip
- Staple anchors are included for a permanent inground mount
- Fire ring only; ADA accessible double fire ring available



300 square inches of cooking area

600H-D 18" ADA Fire Ring

|                   | 7" HIGH | 9" HIGH | 18" HIGH ADA | 18" HIGH ADA             |
|-------------------|---------|---------|--------------|--------------------------|
| <b>With Grate</b> | 600     | 600-9   | 600H         | 600H-D (with inner ring) |
| <b>No Grate</b>   | 601     | 601-9   | —            | —                        |

640 | PEDESTAL MOUNTED COOKING GRILL

- Grill measures 30"L x 20"D x 10-1/2"H
- Optional utility shelf
- Durable rust-resistant, high-temp, black powder coated firebox
- 4-level adjustable cooking grate has cool-coil handles
- All MIG welded 3/16" steel base plate with 10 ga. side plate
- 3-1/2" O.D. post inground mount with optional surface mount design
- ADA versions available



420 square inches of cooking area

616 | ROTATING FLIP-BACK GRILL

- Grill measures 20"L x 14"D x 8"H
- Grill rotates a full 360°
- Durable rust-resistant high-temp black powder coated firebox
- Optional utility shelf
- 4-level adjustable cooking grate has cool-coil handles
- Grate flips back for easy clean-up and fire building
- All MIG welded 7 ga. base plate with 10 ga. side plates
- Galvanized iron pipe post inground mount
- ADA version available



280 square inches of cooking area

|                 | 3-1/2" post | 3-1/2" post with shelf |
|-----------------|-------------|------------------------|
| <b>Standard</b> | 616-3       | 616-3-U                |

612 | MULTI-FUNCTIONAL FIRE RING

- 32" diameter x 30" deep
- Durable rust-resistant, high-temp, black powder-coat firebox
- Permanently mounted 4-level adjustable cooking grate with cool-coil handles
- All MIG welded 7 gauge outer wall with 1" safety lip
- Staple anchors are included for a permanent inground mount



280 square inches of cooking area

612-9 9" Multi-Functional Fire Ring

|  | 7" HIGH | 9" HIGH | 18" HIGH ADA | 18" HIGH ADA             |
|--|---------|---------|--------------|--------------------------|
|  | 612     | 612-9   | 612H         | 612H-D (with inner ring) |

650 | DUAL GRATE GRILL

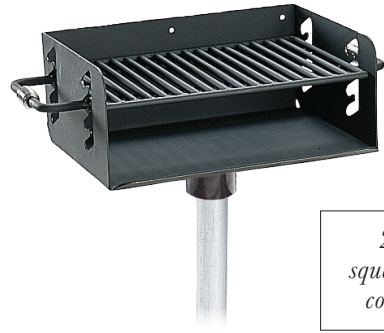
- Grill measures 20"L x 28"D x 8"H
- Durable rust-resistant high-temp black powder coated firebox
- Optional utility shelf
- 4-level adjustable cooking grate has cool-coil handles
- All MIG welded 7 ga. base plate with 10 ga. side plate
- 3-1/2" O.D. posts: permanent inground mount
- Optional lockable grill cover: P-01-03-0135 (for use when grill is out of service)



Lockable grill cover available (P-01-03-0135)

550 square inches of cooking area

GRILLS



Lockable grill cover available (P-01-03-0133)

280-300 square inches of cooking area

620/630 | ADJUSTABLE ROTATING GRILL

- 620 measures 20"L x 14"D x 8"H with 280 square inch cooking area
- 630 measures 20"L x 15"D x 10"H with 300 square inch cooking area
- Grill rotates a full 360°
- Durable rust-resistant, high-temp, black powder coated firebox
- Optional utility shelf
- 4-level adjustable cooking grate has cool-coil handles
- All MIG welded 7 ga. base plate with 10 ga. side plate
- 3-1/2" O.D. post inground mount
- Optional lockable grill cover: P-01-03-0133 (for use when grill is out of service)

| 620 SERIES | 3-1/2" post  |        | 630 SERIES | 3-1/2" post  |        |
|------------|--------------|--------|------------|--------------|--------|
|            | Standard     | 620-3  |            | Standard     | 630-3  |
|            | ADA Standard | 620H-3 |            | ADA Standard | 630H-3 |



1,008 square inches of cooking area

621 | BI-LEVEL GRILL

- Grill measures 28"L x 36"D x 10"H
- Durable rust-resistant, high-temp, black powder coated firebox
- Includes a utility shelf with a 4-level adjustable cooking grate
- 4" square post with 1/4" gussets for additional support
- All MIG welded 7 ga. base plate and side walls
- Inground or surface mount



1,064 square inches of cooking area

627 | COMMERCIAL GRILL

- Grill measures 28"L x 36"D x 10"H
- Durable rust-resistant, high-temp black powder coated firebox
- Cantilever cooking grate
- Grill features a double-flip-back cooking surface for easy cleaning
- 4" sq. post support tubing
- All MIG welded 7 ga. base plate with 10 ga. side walls
- Inground (S) or surface mount (SM)



300 square inches of cooking area

632 | ROTATING GRILL

- Grill measures 20-1/16"L x 18-5/16"D x 40"H
- Grill rotates a full 360°
- Durable rust-resistant high-temp black powder coated firebox
- Cantilever cooking grate
- All MIG welded 7 ga. base plate with 10 ga. side walls
- Inground (S) or surface mount (SM)

|            | 3-1/2" post | 3-1/2" post ADA |
|------------|-------------|-----------------|
| Standard   | 632-3       | 632H-3          |
| Galvanized | 632G-3      | 632HG-3         |



670 Lantern Hanger, black



670 | LANTERN HANGER

- Standard galvanized finish
- Powder coated finish is optional
- 2-3/8" O.D. all MIG welded pipe
- End cap and lantern hook included
- Available as ADA accessible (670H, 48" reach height)
- Inground mount

675 | **NEW** HOT COAL BIN



- Hot Coal Bin Box & Door: Fabricated of laser cut formed 10 gauge steel, Electrically MIG welded
- Hot Coal Bin Top: Fabricated of laser cut formed 12 gauge steel, Electrically MIG welded
- Grate: Fabricated from 1/2" steel rod
- Electrostatic powder coated application oven cured
- 33-7/16" tall x 23-3/4" square with 31 gallon capacity



9WPP-B 9' Sky Blue Umbrella



7G-CRA UltraSite Umbrella with bright aluminum pole, forest green



7G-CRW UltraSite Umbrella with white aluminum pole, pacific blue

| White Aluminum Pole | Champagne Aluminum Pole | Bright Aluminum Pole |
|---------------------|-------------------------|----------------------|
| 7G-CRW              | 7G-CRC                  | 7G-CRA               |

7G | ULTRASITE® UMBRELLA

- Two piece post construction
- (6) 3/8" diameter fiberglass ribs
- Each umbrella weighs 15 lbs (plus packaging)
- Molded nylon joints and end tips
- .065" thick aluminum post
- Umbrella post diameter 1-1/2" O.D.
- Anodized and powder coated finishes
- Crank lift mechanism
- Top with valance in vinyl coated weave only
- Alternating colors are not available
- Umbrella holder (01-04-0484) sold separately



9WPP-B 9' oct. umbrella, 1.5" OD wood post

MCR | UMBRELLA

- 2 piece 1.5" aluminum pole
- Available with crank or pulley & pin lift option
- Powder coated aluminum post available in white, black, or champagne bronze (9' umbrella not available with black post)
- Wooden post option (available for the 9' pulley & pin version only)
- Vented top
- Machine washable cover
- Umbrella holder (01-04-0484) sold separately

| 7.5 FT DIAMETER | 7MCR-A | 7MCR-B | 7MPP-A | 7MPP-B |        |        |
|-----------------|--------|--------|--------|--------|--------|--------|
| 9 FT DIAMETER   | 9MCR-A | 9MCR-B | 9MPP-A | 9MPP-B | 9WPP-A | 9WPP-B |



BLACK WHITE BEIGE

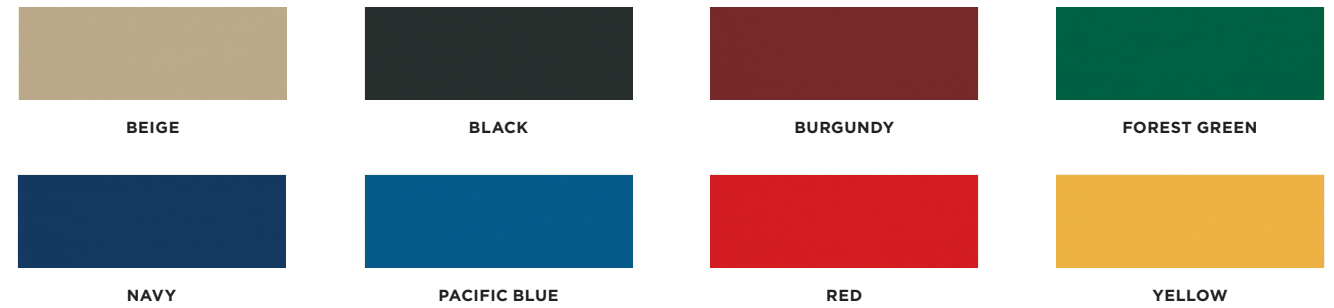
01-04-0484 | UMBRELLA HOLDERS

- Umbrella sold separately
- Available in black, white, and beige
- If used with a 9' umbrella, holder must be filed with concrete

FABRIC GRADES

Brightly colored umbrellas are a great way to add charm and functionality to your recreation space. Choose between the 7G Umbrella featuring vinyl coated weave or the MCR umbrella. All MCR umbrellas are available in either Grade A or Grade B fabric. Grade A is .25 ounces lighter per square yard than Grade B. The marine grade fabric is mildew repellent, water repellent, UV resistant, and won't shrink!

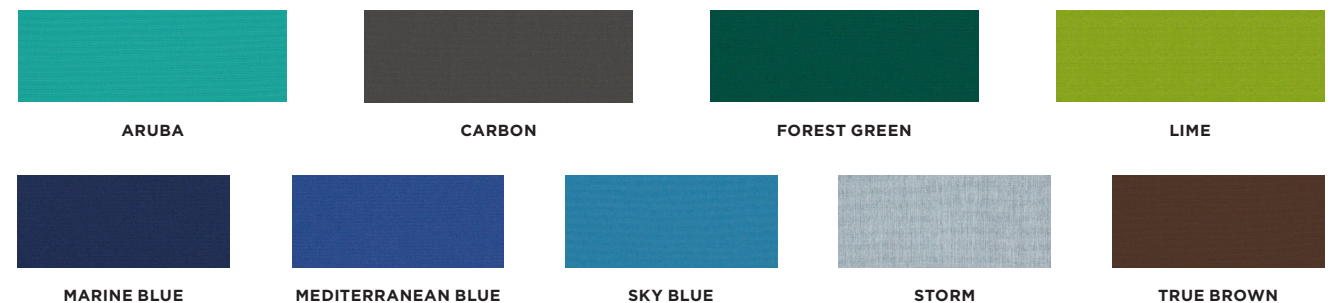
7G COLOR OPTIONS

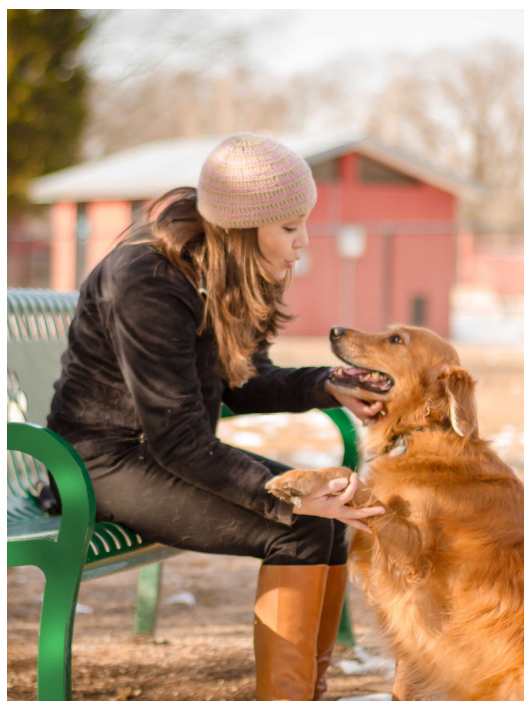


MCR GRADE A COLOR OPTIONS



MCR GRADE B COLOR OPTIONS





ULTRASHADE



ULTRASHADE™  
UltraSite offers UltraShade™, a wide variety of high-quality engineered shade products that protect from many of Mother Nature's elements. An UltraSite sales representative will guide you through a simplified design and order process to provide a shade structure that helps protect your recreation investment and your community.

Visit [www.ultra-site.com/shade](http://www.ultra-site.com/shade) for more information.



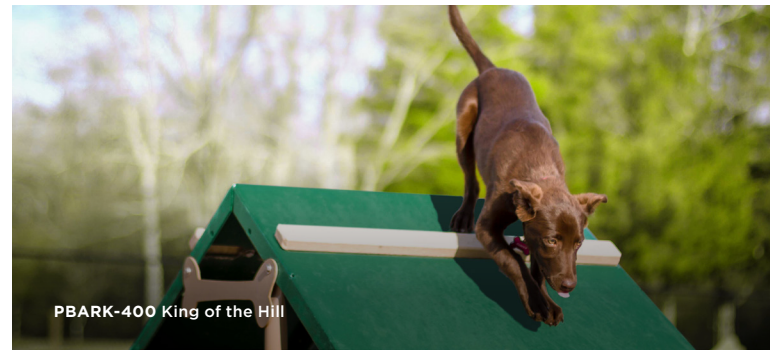


BARK PARK

Bark Park® by UltraSite offers dog park equipment based on popular agility obstacles and has been developed for use by dogs of all abilities and confidence levels.

Most of all, Bark Parks are attractive and fun places for pets and their families to exercise, socialize, and enjoy nature!

Visit our website to view the full line and get our complete catalog:  
[www.dogparkproduct.com](http://www.dogparkproduct.com)



PBARK-400 King of the Hill



PBARK-450 Rover Jump Over

ACCESSORIES

From Fire Hydrants to Waste Stations, Bark Park has all of your finishing touches!



PBARK-467 Pet Waste Station



UNLEASHED

Request a copy of Unleashed, a research-based guidebook developed by PlayCore to help communities plan, fund, build, and advocate for dog parks!

<https://www.playcore.com/programs/unleashed>



UP164 Cardio Walker



UP191 Shoulder Rotator



UP262 Body Curl

ActionFit by UltraSite is positively impacting landscapes with modern outdoor fitness equipment designed specifically for ages 13 and up. ActionFit encourages interaction and the importance of getting fit.

Visit our website to view the full fitness product line and get access to our complete catalog:  
[www.actionfitoutdoors.com](http://www.actionfitoutdoors.com)



OUTDOOR FITNESS PARKS: BEST PRACTICES FOR PROMOTING COMMUNITY HEALTH BY INCREASING PHYSICAL ACTIVITY.

PlayCore, in partnership with noted scholars, developed this guide to inform why outdoor fitness is so beneficial and to help design an outdoor space that delivers a complete workout!

<https://www.playcore.com/programs/outdoor-adult-fitness>





## WARRANTY &amp; TERMS

## ULTRASITE LIMITED WARRANTY

Ten-Year Limited Structural Warranty on premium site furnishings against structural failure. 7-Year Limited Warranty on thermoplastic coated elements. 5-Year Limited Warranty on premium powder coated elements, 3-Year Limited Warranty on standard powder coated elements. 10-Year Limited Warranty on recycled plastic lumber and 1-Year Limited Warranty on IPE, untreated, redwood, and pressure treated wooden elements. UltraSite® guarantees all items for one full year to be free of defects in workmanship or materials when installed and maintained properly. We agree to repair or replace any items determined to be defective. Items specifically not covered by this warranty include vandalism, man made or natural disasters, lack of maintenance, normal weathering or wear, and tear due to public use.

## ORDER INFORMATION

Please contact an UltraSite sales representative at [sales@ultra-site.com](mailto:sales@ultra-site.com) or 800-458-5872 with any questions or to order products. You may also order products by sending your standard purchase order form by fax or mail to the address provided on the back cover. When ordering, please include a brief description of all items and/or the item model number contained herein. Be sure to also include colors for UltraCoat® and powder coated surfaces. Quotes are good for 30 days.

## GSA CONTRACT

GSA pricing is available on several items. Contact our sales department for specific information at 1-800-458-5872.

## SPECIFICATIONS

Due to UltraSite's continuous product improvement, we reserve the right to change product specifications when necessary without notice.

## PRICING

UltraSite® strives to keep pricing as low as possible. However, should we encounter increases in our costs that are too large to absorb, we reserve the right to increase prices without notice.

## FINANCING NOW AVAILABLE

We have partnered with Navitas Credit Corp. for your financing needs. Navitas is a recognized leader in the equipment financing industry. For more information visit, [www.navitascredit.com](http://www.navitascredit.com)

## TERMS

Approved accounts net 30 days. Initial order requires payment in full before shipment. A finance charge of 1-1/2% per month will be applied to all delinquent accounts. We accept:



## FREIGHT CHARGES

Terms of sale are F.O.B. factory. UltraSite® will prepay and add the freight to the invoice if requested to do so. All weights are approximate.

## DAMAGES

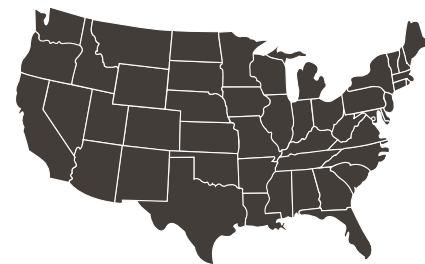
Damages or loss in transit is the responsibility of the carrier, whether visible or concealed. It is the responsibility of the recipient to assure that the order is received complete. Before signing the delivery receipt, inspect the shipment immediately and completely. Note any damages or shortages on the bill of lading. Damage reports must be filed within 5 days. UltraSite® is NOT responsible for damages or loss in transit. Title to all goods passes to the customer at the time of shipment. UltraSite® will assist in filing claims if the freight arrangements were made by UltraSite® at your request.

## CANCELLATIONS AND RETURNS

Cancellations are only accepted with pre-approval from UltraSite®. No merchandise shall be returned without a Return Goods Authorization number which is issued by customer service. Any authorized merchandise must be carefully packed and received in saleable condition. A restocking charge of up to 25% will be applied to all returned goods when the error is not the fault of UltraSite®. All returns must be shipped freight prepaid.

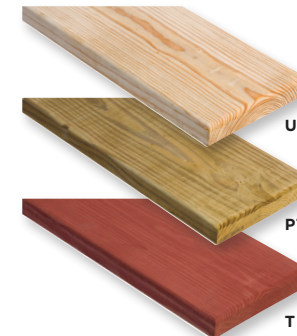
## NATIONWIDE INSTALLATION

We offer affordable delivery and installation pricing in the continental USA. Any zip code, anytime!



THERMO: AAMA 2605  
AAMA CERTIFICATION 2604

## PLANK STYLES AND COLOR OPTIONS



## WOOD PLANKS

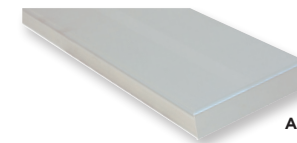
- 2" x 10" and 2" x 4" sizes
- Rounded edges
- #1 southern yellow pine

**(U) UNTREATED**

- **(PT) PRESSURE TREATED**
- Environmentally friendly (ACQ)
- Kiln dried before and after treatment

**(T) REDWOOD STAIN**

- Sealed in redwood stain with wood preservative

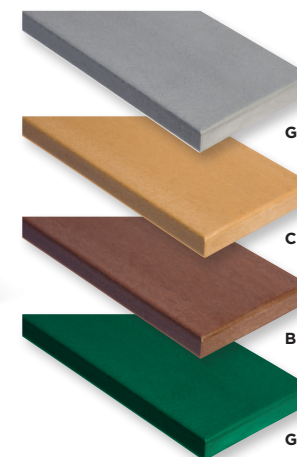


## ALUMINUM PLANKS

- 2" x 10" size
- 6063-T6 extruded aluminum alloy

**(A) ANODIZED**

- Used for table tops, seats, and backs on most products



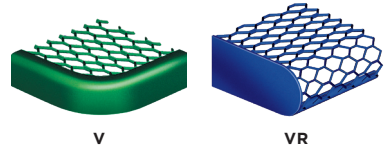
## RECYCLED PLANKS

- 2" x 10", 2" x 4", 3" x 4", and 4" x 4" sizes
- Rounded edges
- 100% recycled plastic with color
- Ask about custom color options

**(GRY) GRAY****(CDR) CEDAR****(BRN) BROWN****(GRN) GREEN**

DIE FORMED SEAT PATTERNS

COLOR GUIDE\*

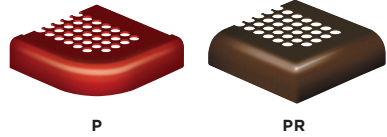


**V | DIAMOND**

- 9-gauge material
- Expanded metal
- Round corners
- 3/4" opening

**VR | DIAMOND ROLLED EDGE**

- 9-gauge material
- Expanded metal
- Rolled edge
- 3/4" opening



**P | PERFORATED**

- Perforated metal
- Round corners
- 5/8" diameter punched pattern
- 12-gauge sheet steel

**PR | PERFORATED ROLLED EDGE**

- Perforated metal
- Rolled corners
- 5/8" diameter punched pattern
- 14-gauge sheet steel



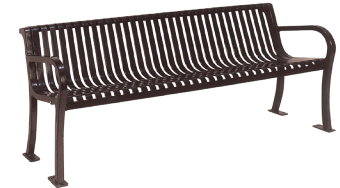
**W | WAVE**

- 12-gauge sheet steel



**FB | FIESTA**

- 12-gauge sheet steel



**S | SLAT**

- 12-gauge sheet steel



**HS | HORIZONTAL SLAT**

- 12-gauge sheet steel



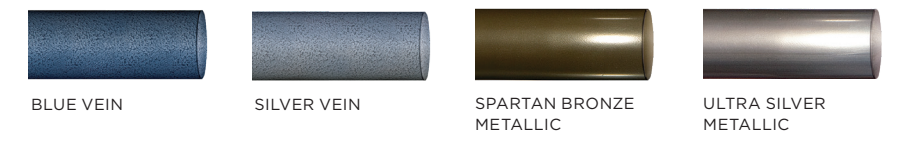
**ULTRACOAT® THERMOPLASTIC COLORS**

- Superior adhesion
- Resistance to cutting and vandalism
- No runs or drips
- Smooth finish prevents mold and mildew
- Easily repaired
- UV protection
- Environmentally friendly



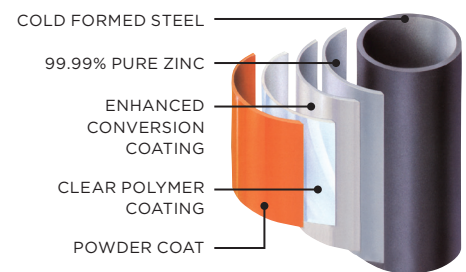
**STANDARD POWDER COAT COLORS**

The steel framework used in the UltraCoat® product line delivers one of the industry's most durable protective coatings. UltraSite further enhances the durability by applying a superior powder coated finish. The process provides three layers of protection from harmful environmental elements, with very little maintenance.



**PREMIUM POWDER COAT COLORS**

- Additional upcharge



**STANDARD POWDER COAT**

- Uniform coating
- Durability
- High-quality
- Attractive finish



**HOT-DIP GALVANIZED**

- Galvanized both inside and out
- Superior four-layer adhesion bond
- Excellent abrasion resistance
- Provides cathodic protection to the underlying steel
- Increases the useful life of steel

\*Colors are approximate, contact us for physical samples.

**Kraftsman Commercial  
Playgrounds & Water Parks**

19535 Haude Rd.  
Spring, TX 77388  
800.451.4869  
info@kraftsmanplay.com

[kraftsmanplay.com](http://kraftsmanplay.com)



SITE FURNISHINGS | DOG PARKS | SHADE | OUTDOOR FITNESS

